



22956 Highway 61 Morley, MO 63767 Phone: (573) 262-3545 Fax: (573) 262-3369

Owner's Manual

POWER REVERSING UNDERBODY SCRAPER





22956 Highway 61 Morley, MO 63767 Phone: (573) 262-3545 Fax: (573) 262-3369

GENERAL OPERATING INSTRUCTIONS

1. The operator should familiarize him/herself with all equipment prior to operation. The in-cab controls are placed at a comfortable reach of the operator, with an allowable amount of adjustment. If necessary, the controls can be adjusted for either driver or passenger use.
2. See cab control layout. All levers are clearly marked as to the equipment/function they control.
3. To raise the scraper, pull back on the appropriate control lever, to lower the scraper, push the control lever forward. To reverse the scraper from left to right, move the appropriate control lever left and/or right. **NOTE:** The in cab controls are proportional to the hydraulic valve, therefore the further the control lever is moved the faster the scraper will raise, lower, and reverse.
4. Before putting any equipment into use, check for any worn, damaged or loose components, if necessary repair or replace. Listen for any unusual sounds, if necessary repair and/or replace worn or damaged parts.
5. Before operating any equipment be sure to read and fully understand all caution and safety warnings. Familiarize yourself and others with all caution/warning labels and their locations. Make sure all labels are complete and legible. Replace any labels that have become unreadable and/or missing. Replacement labels can be purchased directly from Viking-Cives Midwest, Inc.

REGISTRATION OF EQUIPMENT AND WARRANTY INFORMATION

Before using equipment check for damage. Report any damage to equipment at once to Viking-Cives Midwest, Inc. The warranty period becomes effective upon date of delivery of equipment unless other arrangements have been made with a Viking-Cives Midwest, Inc. distributor or Viking-Cives Midwest, Inc. The information required to register the equipment may be found on the serial number tag secured to the equipment.

A WORD ABOUT SAFETY

The equipment described in this manual is normally being operated in winter conditions with bad weather and snow & ice conditions. Due to these adverse operating conditions it is important that you the operator use good safety practices at all times to protect yourself, co-workers, and others when using the equipment.

This manual does not list all the hazards associated with the operation and maintenance of this equipment. The operator must use his/her own good judgment supplemented with the information found on the safety decals, instructions in this manual, your employer's safety programs, safety codes, local, state/provincial, and federal laws, rules and regulations.

When operating/performing maintenance on this equipment, and troubleshooting equipment operations, observe and obey all safety decals on the equipment and warnings listed in the manual. Failure to do so could result in damage to equipment, serious bodily injury and/or death.

Remember at all times that the operator is responsible for the safe operation of this equipment and responsible for the safety of others. Good safety practices not only protect you but also protect the people around you.



22956 Highway 61 Morley, MO 63767 Phone: (573) 262-3545 Fax: (573) 262-3369

PERIODIC MAINTENANCE INSPECTION
DAILY INSPECTION AND LUBRICATION

Daily inspection along with periodic preventive maintenance will reduce the chance of any major repairs and down time during equipment use.

1. Check the fluid level in the hydraulic oil reservoir. If the sight gauge indicates low hydraulic fluid level, add the appropriate amount of the specified hydraulic fluid and check gauge again to ensure it is functioning correctly. **Cold Weather Operation:** All equipment is designed to operate with hydraulic oil minimally warm. During cold weather conditions, it is recommended that the truck be run at idle with the pump engaged and circulating the oil through the system before operating equipment.
2. Check all components for loose and/or missing fasteners, if required tighten and/or replace.
3. Visually inspect all battery terminals and electrical connections, wires, switches, etc. for signs of corrosion, wear, loose and/or broken connections, etc. At the beginning of each shift review all lighting accessories to ensure proper working conditions, immediately replace any broken or non-functioning bulbs and/or lenses.
4. Visually inspect all hydraulic connections and hoses for cracks and/or leaks. Rupturing hoses may produce a high-pressure stream of hot hydraulic oil.
5. Check all cables and chains for excessive wear or damage.
6. Visually inspect plow units. Check cutting edges. If cutting edge has excessive wear remove and rotate, or if required, replace. **CAUTION:** Do not allow cutting edge to wear down to moldboard of the scraper. Any wear to the moldboard may affect the operation and safety of the equipment. Replacement is costly.
7. Thoroughly grease all grease points as indicated on the **Grease Point Diagram**.
8. At the beginning of each shift visually inspect all caution and warning decals. All decals should be complete and legible. If decals are not legible, clean them. If cleaning the decals does not make them legible, install new decals.



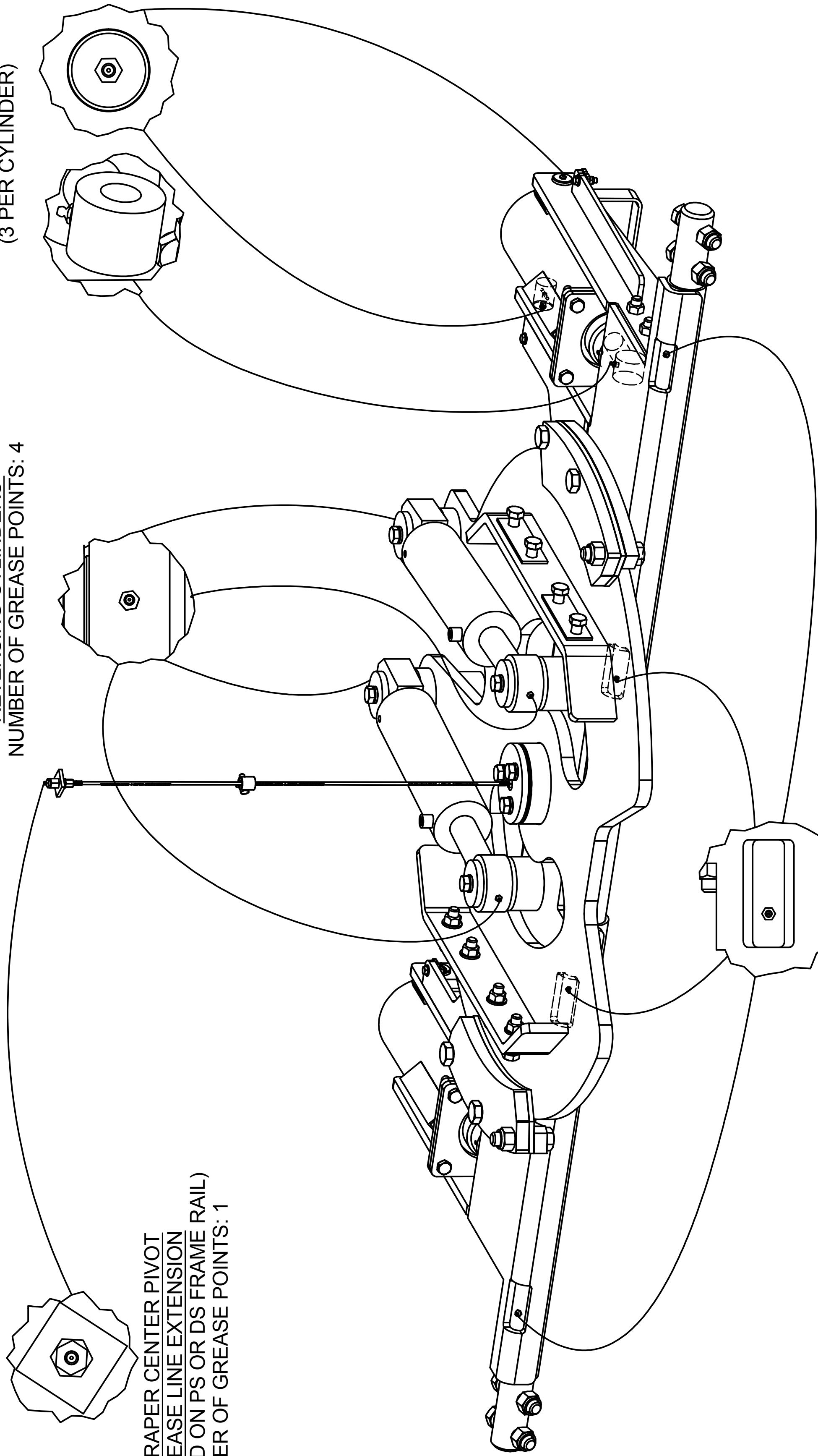
22956 HWY 61, MORLEY, MO 63767, PH: 573.262.3545, FX: 573.232.3369

**UNDERBODY SCRAPER POWER REVERSE FRAME
GREASE POINT DIAGRAM**

MOLDBOARD LIFT CYLINDERS
NUMBER OF GREASE POINTS: 6
(3 PER CYLINDER)

REVERSING CYLINDERS
NUMBER OF GREASE POINTS: 4

SCRAPER CENTER PIVOT
GREASE LINE EXTENSION
(LOCATED ON PS OR DS FRAME RAIL)
NUMBER OF GREASE POINTS: 1



MOLDBOARD PIVOT SHAFT
NUMBER OF GREASE POINTS: 4

APPLIES TO BOTH 20" & 15" MODEL MOLDBOARD SCRAPERS

EQUIPMENT MAY NOT BE EXACTLY AS SHOWN. SOME COMPONENTS MAY BE OPTIONAL.
TO MAINTAIN OUR ON-GOING PRODUCT AND DEVELOPMENT IMPROVEMENT PROGRAM, VIKING-GIVES RESERVES THE RIGHT TO CHANGE EQUIPMENT & SPECIFICATION WITHOUT NOTICE.



22956 HWY 61, MORLEY, MO 63767, PH: 573.262.3545, FX: 573.232.3369

20" MOLDBOARD SCRAPERS

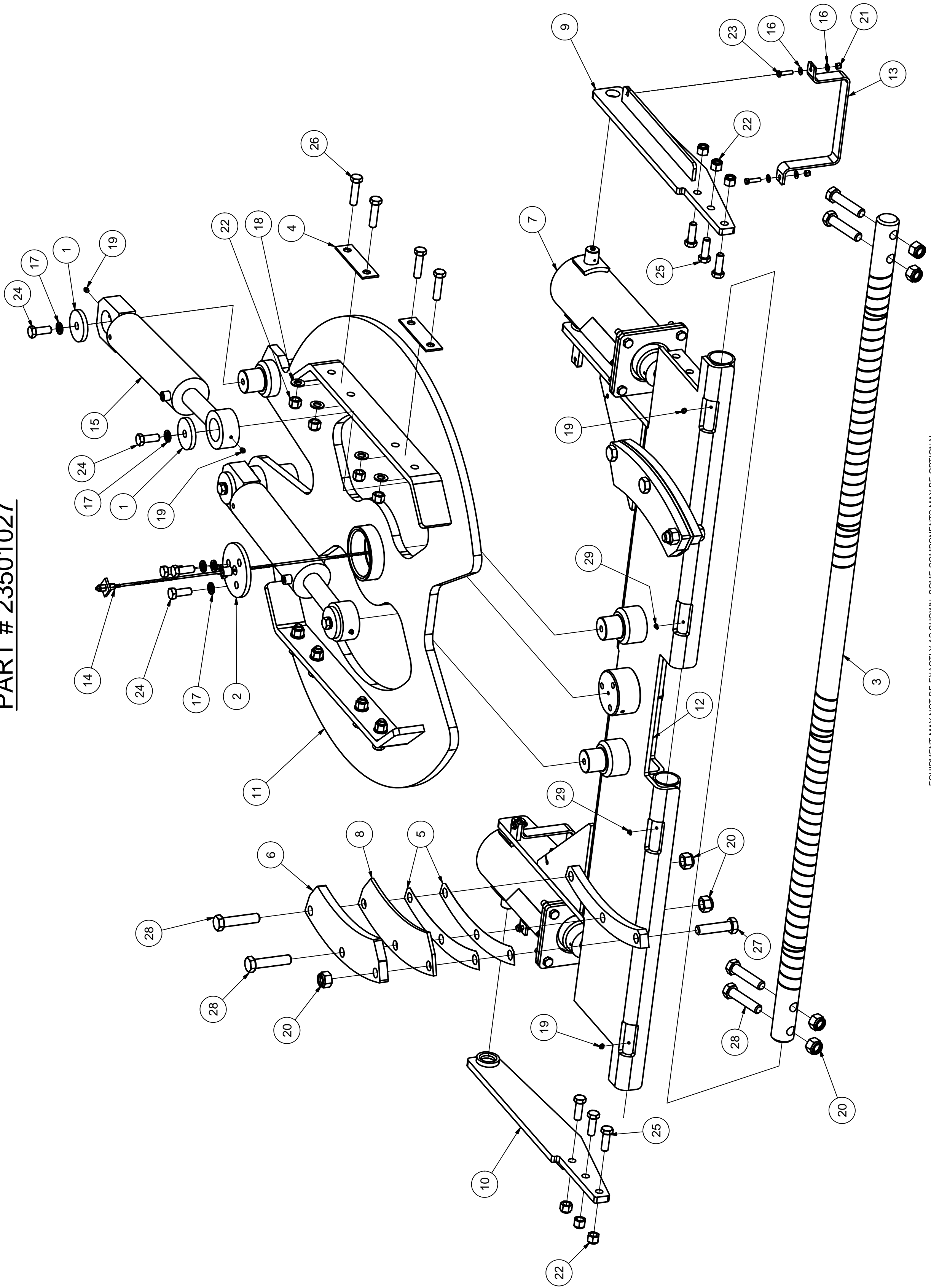
EQUIPMENT MAY NOT BE EXACTLY AS SHOWN. SOME COMPONENTS MAY BE OPTIONAL
TO MAINTAIN OUR ON-GOING PRODUCT AND DEVELOPMENT IMPROVEMENT PROGRAM, VIKING-CIVES RESERVES THE RIGHT TO CHANGE EQUIPMENT & SPECIFICATION WITHOUT NOTICE.



22956 HWY 61, MORLEY, MO 63767, PH: 573.262.3545, FX: 573.232.3369

20" MOLDBOARD UNDERBODY SCRAPER POWER REVERSE FRAME ASSEMBLY

PART # 23501027



EQUIPMENT MAY NOT BE EXACTLY AS SHOWN. SOME COMPONENTS MAY BE OPTIONAL. TO MAINTAIN OUR ON-GOING PRODUCT AND DEVELOPMENT IMPROVEMENT PROGRAM, VIKING-CIVES RESERVES THE RIGHT TO CHANGE EQUIPMENT & SPECIFICATION WITHOUT NOTICE.

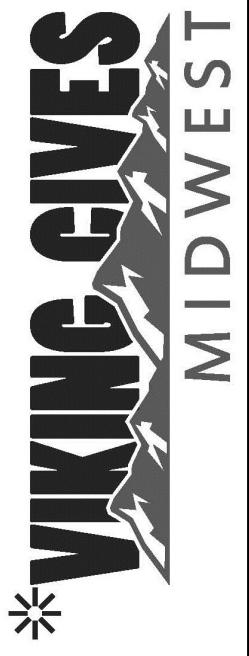


22956 HWY 61, MORLEY, MO 63767, PH: 573.262.3545, FX: 573.232.3369

20" MOLDBOARD UNDERBODY SCRAPER POWER REVERSE FRAME ASSEMBLY
PART # 23501027

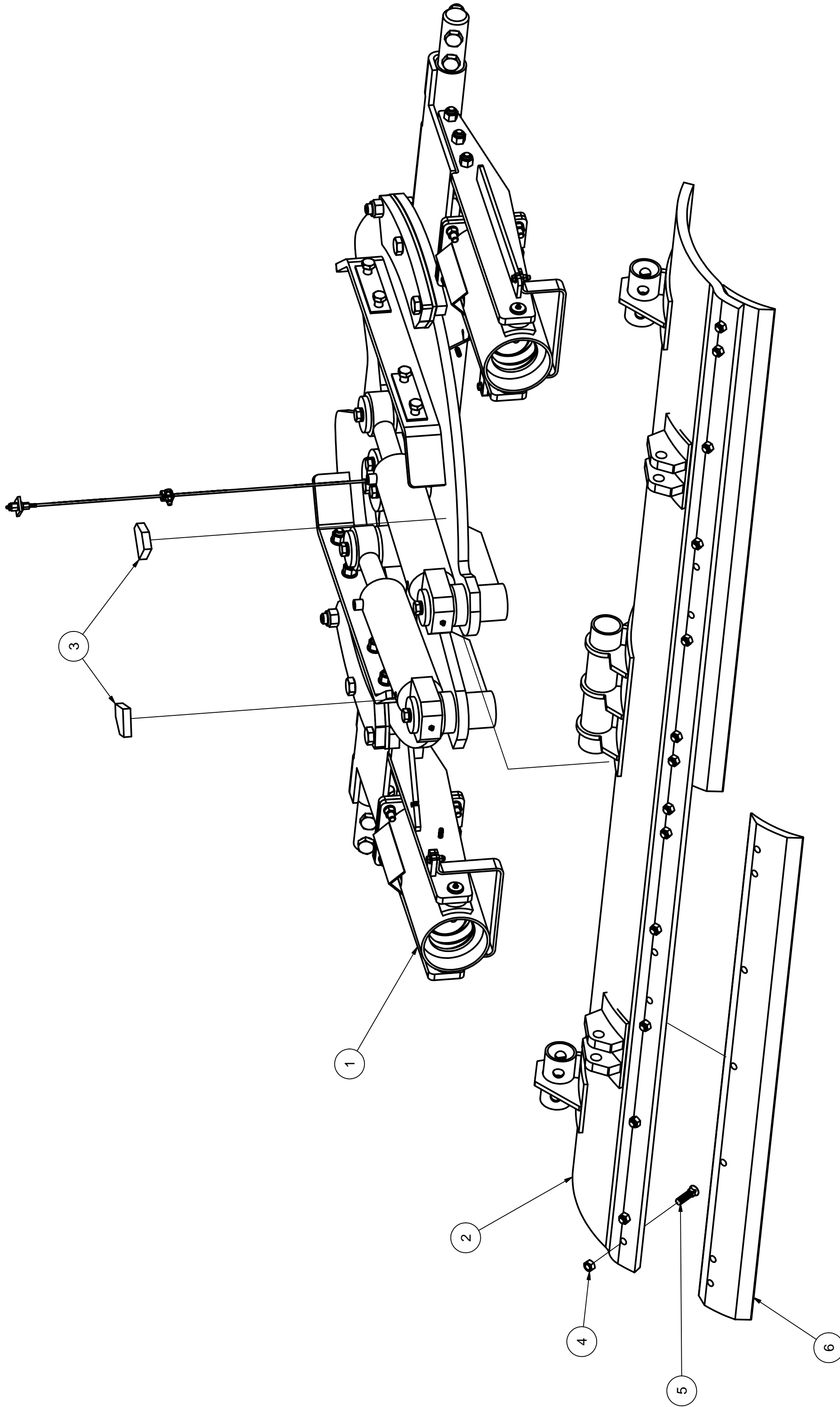
ITEM	DRAWING NO.	ALT. ITEM NO.	DESCRIPTION	QTY
1	00401735	4906	BUSHING 3.50B 0.813D 0.500N	4
2	00401771		BUSHING 6.00B 0.813D 0.500N	1
3	03500039	4876	PIVOT SHAFT 2.500 X 103.500	1
4	03500043	5273	SPACER 7.000 X 2.000 X 0.1875	4
5	03500045	4908	SHIM PLATE UNDERBODY SCRAPER	4
6	03500046	4909	LOWER CLAMP	2
7	03500072		MOLDBOARD LIFT CYL ASS'Y	2
8	03500077		WEAR PLATE	2
9	03500089		OUTER SUPPORT PLATE WELD'T RTH	1
10	03500092		OUTER SUPPORT PLATE WELD'T LTH	1
11	23503022		CIRCLE WELD'T - 5IN (2015)	1
12	23503023		SUPPORT TUBE WELD'T - FORMED (2015)	1
13	23522041		CYLINDER STOP BAR	2
14	43140002		REMOTE GREASE ZERK ASSEMBLY UBS	1
15	55401014	80182	CYLINDER HYD DA 4 X 12 ROTATION UB	2
16	HW14A-06		FLATWASHER SAE 3/8 ZINC	8
17	HW14C-12	81062	LOCKWASHER SPLIT 3/4 ZINC	7
18	HW16A-12		FLATWASHER HARDENED 3/4 ZINC	8
19	BENCHSTOCK	60105	ZERK GREASE 1/4 -28 STRAIGHT NPT	6
20	HW30D-16		NUT HEX ELASTIC 1" UNC ZINC	10
21	HW30D-06	81086C	NUT HEX ELASTIC 3/8 UNC ZINC	4
22	HW30E-12		NUT HEX TOPLOCK 3/4" UNC ZINC	14
23	HW40A-0612	81091	BOLT HEX 3/8 X 1 1/2 UNC ZINC	4
24	HW40A-1216	81064E	BOLT HEX 3/4 X 2 UNC ZINC	7
25	HW40A-1218	81064F	BOLT HEX 3/4 X 2 1/4 UNC ZINC	6
26	HW40A-1224		BOLT HEX 3/4 X 3 UNC ZINC	8
27	HW40A-1632	81022	BOLT HEX 1 X 4 UNC ZINC	2
28	HW40A-1636	81022	BOLT HEX 1 X 4 1/2 UNC ZINC	8
29	BENCHSTOCK	60106	ZERK GREASE 1/4 -28 45 DEG NPT	2

EQUIPMENT MAY NOT BE EXACTLY AS SHOWN. SOME COMPONENTS MAY BE OPTIONAL. TO MAINTAIN OUR ON-GOING PRODUCT AND DEVELOPMENT IMPROVEMENT PROGRAM, VIKING-CIVES RESERVES THE RIGHT TO CHANGE EQUIPMENT & SPECIFICATION WITHOUT NOTICE.



22956 HWY 61, MORLEY, MO 63767, PH: 573.262.3545, FX: 573.232.3369

10' X 20" MOLDBOARD (KINK) UNDERBODY SCRAPER ASSEMBLY
PART # 23501028



EQUIPMENT MAY NOT BE EXACTLY AS SHOWN. SOME COMPONENTS MAY BE OPTIONAL.
TO MAINTAIN OUR ON-GOING PRODUCT AND DEVELOPMENT IMPROVEMENT PROGRAM, VIKING-CIVES RESERVES THE RIGHT TO CHANGE EQUIPMENT & SPECIFICATION WITHOUT NOTICE.



22956 HWY 61, MORLEY, MO 63767, PH: 573.262.3545, FX: 573.232.3369

10' X 20" MOLDBOARD (KINK) UNDERBODY SCRAPER ASSEMBLY
PART # 23501028

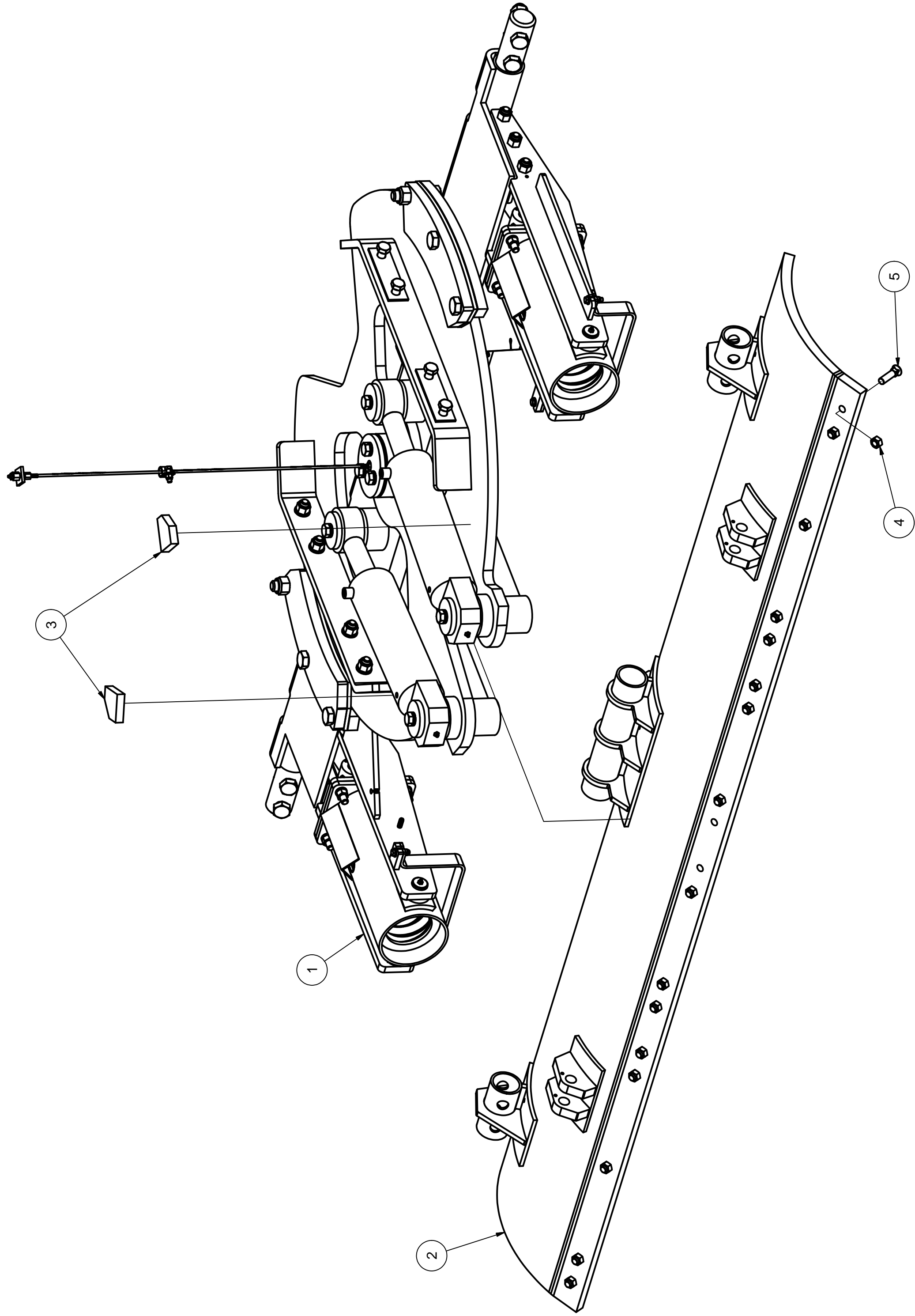
ITEM	DRAWING NO.	ALT. ITEM NO.	DESCRIPTION	QTY
1	23501027		UBS PWR REV FRAME ASS'Y FORMED (2015)	1
2	23503056		10 FT UBS MOLDBOARD WELDMENT (KINKED)	1
3	23505009	00734329	GUSSET 90 3.25X2.75 1.25X1.75 0.75T	2
4	HW30E-10		NUT HEX 5/8 UNC TOPLOCK ZINC	14
5	HW42B-1020	81074C	BOLT PLOW 5/8 X 2 1/2 UNC ZINC	14
6	0500073		BLADE GRADER 5/8 X 6 X 60	2

EQUIPMENT MAY NOT BE EXACTLY AS SHOWN. SOME COMPONENTS MAY BE OPTIONAL
TO MAINTAIN OUR ON-GOING PRODUCT AND DEVELOPMENT IMPROVEMENT PROGRAM, VIKING-CIVES RESERVES THE RIGHT TO CHANGE EQUIPMENT & SPECIFICATION WITHOUT NOTICE.

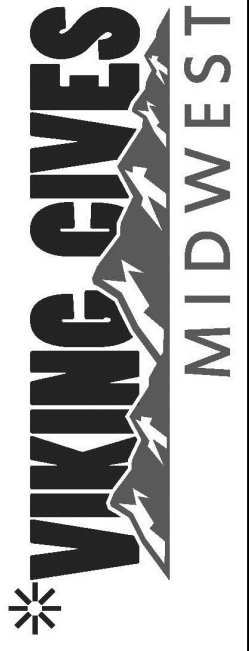


22956 HWY 61, MORLEY, MO 63767, PH: 573.262.3545, FX: 573.232.3369

10' X 20" MOLDBOARD (NO KINK) UNDERBODY SCRAPER ASSEMBLY
PART # 23501033



EQUIPMENT MAY NOT BE EXACTLY AS SHOWN. SOME COMPONENTS MAY BE OPTIONAL.
TO MAINTAIN OUR ON-GOING PRODUCT AND DEVELOPMENT IMPROVEMENT PROGRAM, VIKING-CIVES RESERVES THE RIGHT TO CHANGE EQUIPMENT & SPECIFICATION WITHOUT NOTICE.



22956 HWY 61, MORLEY, MO 63767, PH: 573.262.3545, FX: 573.232.3369

10' X 20" MOLDBOARD (NO KINK) UNDERBODY SCRAPER ASSEMBLY
PART # 23501033

ITEM	DRAWING NO.	ALT. ITEM NO.	DESCRIPTION	QTY
1	23501027		UBS PWR REV FRAME ASS'Y FORMED (2015)	1
2	23503018		10 FT UBS MOLDBOARD WELDMENT NO KINK	1
3	23505009	00734329	GUSSET 90 3.25X2.75 1.25X1.75 0.75T	2
4	HW30E-10		NUT HEX 5/8 UNC TOPLOCK ZINC	16
5	HW40B-1020	81074C	BOLT PLOW 5/8 X 2 1/2 UNC ZINC	16

EQUIPMENT MAY NOT BE EXACTLY AS SHOWN. SOME COMPONENTS MAY BE OPTIONAL
TO MAINTAIN OUR ON-GOING PRODUCT AND DEVELOPMENT IMPROVEMENT PROGRAM, VIKING-CIVES RESERVES THE RIGHT TO CHANGE EQUIPMENT & SPECIFICATION WITHOUT NOTICE.



22956 Highway 61 Morley, MO 63767 Phone: (573) 262-3545 Fax: (573) 262-3369

NOTES

A series of horizontal lines providing space for notes.



22956 HWY 61, MORLEY, MO 63767, PH: 573.262.3545, FX: 573.232.3369

15" MOLDBOARD SCRAPERS

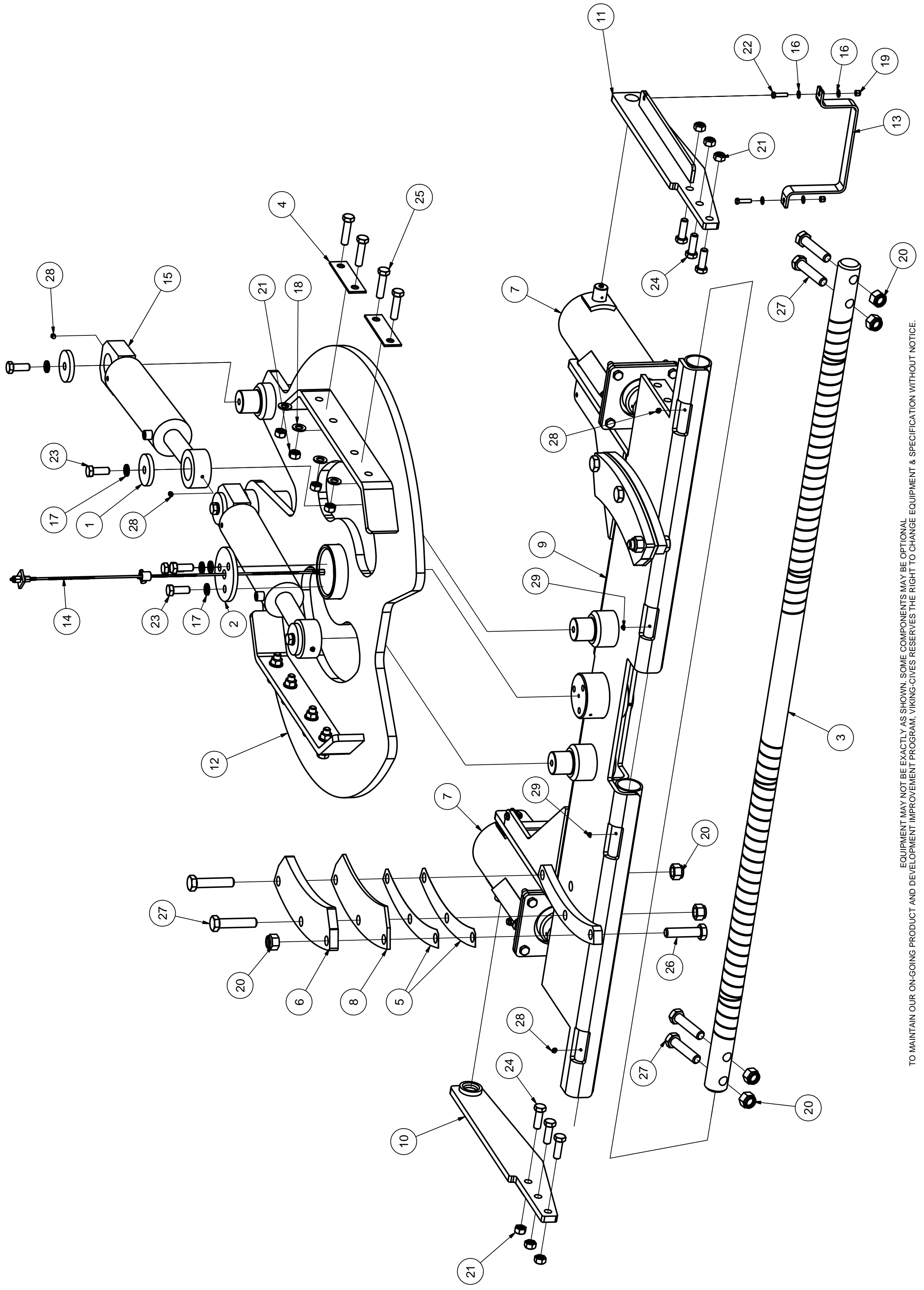
EQUIPMENT MAY NOT BE EXACTLY AS SHOWN. SOME COMPONENTS MAY BE OPTIONAL
TO MAINTAIN OUR ON-GOING PRODUCT AND DEVELOPMENT IMPROVEMENT PROGRAM, VIKING-CIVES RESERVES THE RIGHT TO CHANGE EQUIPMENT & SPECIFICATION WITHOUT NOTICE.



22956 HWY 61, MORLEY, MO 63767, PH: 573.262.3545, FX: 573.232.3369

15" MOLDBOARD UNDERBODY SCRAPER POWER REVERSE FRAME ASSEMBLY

PART # 23501031



EQUIPMENT MAY NOT BE EXACTLY AS SHOWN. SOME COMPONENTS MAY BE OPTIONAL. TO MAINTAIN OUR ON-GOING PRODUCT AND DEVELOPMENT IMPROVEMENT PROGRAM, VIKING-CIVES RESERVES THE RIGHT TO CHANGE EQUIPMENT & SPECIFICATION WITHOUT NOTICE.

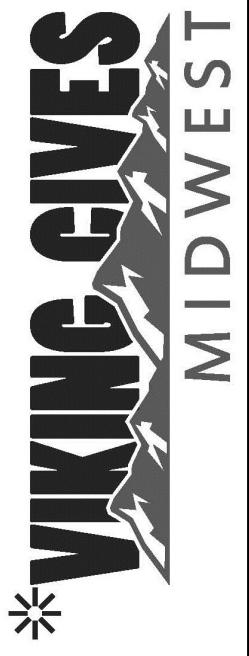


22956 HWY 61, MORLEY, MO 63767, PH: 573.262.3545, FX: 573.232.3369

15" MOLDBOARD UNDERBODY SCRAPER POWER REVERSE FRAME ASSEMBLY
PART # 23501031

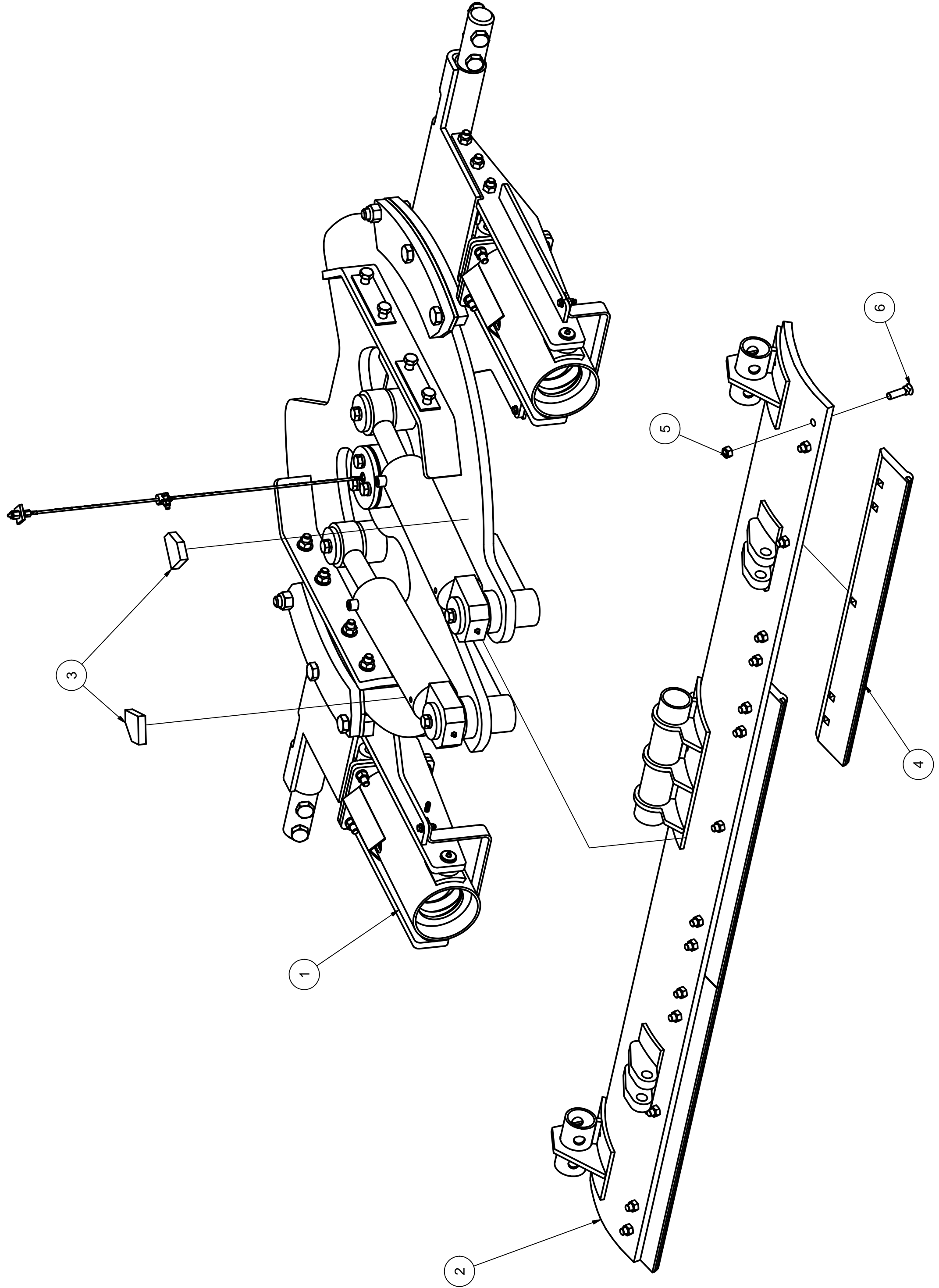
ITEM	DRAWING NO.	ALT. ITEM NO.	DESCRIPTION	QTY
1	00401735	4906	BUSHING 3.50B 0.813D 0.500N	4
2	00401771		BUSHING 6.00B 0.813D 0.500N	1
3	03500039	4876	PIVOT SHAFT 2.500 X 103.500	1
4	03500043	5273	SPACER 7.000 X 2.000 X 0.1875	4
5	03500045	4908	SHIM PLATE UNDERBODY SCRAPER	4
6	03500046	4909	LOWER CLAMP	2
7	03500072		MOLDBOARD LIFT CYL ASS'Y	2
8	03500077		WEAR PLATE	2
9	23503030		SUPPORT TUBE WELD'T - SPECIAL 9 FT X 15 IN	1
10	23503032		OUTER SUPPORT PLATE WELD'T LTH	1
11	23503033		OUTER SUPPORT PLATE WELD'T RTH	1
12	23503047		CIRCLE WELD'T - 5IN (2015) SMALL FORMED BAR 15" MOLDBOARD	1
13	23522041		CYLINDER STOP BAR	2
14	43140002		REMOTE GREASE ZERK ASSEMBLY UBS	1
15	55401014	80182	CYLINDER HYD DA 4 X 12 ROTATION UB	2
16	HW14A-06		FLATWASHER SAE 3/8 ZINC	8
17	HW14C-12	81062	LOCKWASHER SPLIT 3/4 ZINC	7
18	HW16A-12		FLATWASHER HARDENED 3/4 ZINC	8
19	HW30D-06	81086C	NUT HEX ELASTIC 3/8 UNC ZINC	4
20	HW30D-16		NUT HEX ELASTIC 1" UNC ZINC	10
21	HW30E-12		NUT HEX 3/4 UNC TOPLOCK ZINC	14
22	HW40A-0612	81091	BOLT HEX 3/8 X 1 1/2 UNC ZINC	4
23	HW40A-1216	81064E	BOLT HEX 3/4 X 2 UNC ZINC	7
24	HW40A-1218	81064F	BOLT HEX 3/4 X 2 1/4 UNC ZINC	6
25	HW40A-1224		BOLT HEX 3/4 X 3 UNC ZINC	8
26	HW40A-1632	81022	BOLT HEX 1 X 4 UNC ZINC	2
27	HW40A-1636	81022	BOLT HEX 1 X 4 1/2 UNC ZINC	8
28	BENCHSTOCK	60105	ZERK GREASE 1/4 -28 STRAIGHT NPT	6
29	BENCHSTOCK	60106	ZERK GREASE 1/4 -28 45 DEG NPT	2

TO MAINTAIN OUR ON-GOING PRODUCT AND DEVELOPMENT IMPROVEMENT PROGRAM, VIKING-CIVES RESERVES THE RIGHT TO CHANGE EQUIPMENT & SPECIFICATION WITHOUT NOTICE. EQUIPMENT MAY NOT BE EXACTLY AS SHOWN. SOME COMPONENTS MAY BE OPTIONAL.



22956 HWY 61, MORLEY, MO 63767, PH: 573.262.3545, FX: 573.232.3369

9' X 15" (NO KINK) UNDERBODY SCRAPER ASSEMBLY
PART # 23501032



EQUIPMENT MAY NOT BE EXACTLY AS SHOWN. SOME COMPONENTS MAY BE OPTIONAL.
TO MAINTAIN OUR ON-GOING PRODUCT AND DEVELOPMENT IMPROVEMENT PROGRAM, VIKING-CIVES RESERVES THE RIGHT TO CHANGE EQUIPMENT & SPECIFICATION WITHOUT NOTICE.



22956 HWY 61, MORLEY, MO 63767, PH: 573.262.3545, FX: 573.232.3369

9' X 15" (NO KINK) UNDERBODY SCRAPER ASSEMBLY
PART # 23501032

ITEM	DRAWING NO.	ALT. ITEM NO.	DESCRIPTION	QTY
1	23501031		UBS PWR REV FRAME ASS'Y FORMED (2015) 9' UBS	1
2	23503029		9' X 15" UBS MOLDBOARD WELDMENT NO KINK	1
3	23505009	00734329	GUSSET 90 3.25X2.75 1.25X1.75 0.75T	2
4	280062	CB3131531CMR	3' REVERSED CARBIDE UBS CUTTING EDGE	3
5	HW30E-10		NUT HEX 5/8 UNC TOPLOCK ZINC	15
6	HW40B-1020	81074C	BOLT PLOW 5/8 X 2 1/2 UNC ZINC	15

EQUIPMENT MAY NOT BE EXACTLY AS SHOWN. SOME COMPONENTS MAY BE OPTIONAL
TO MAINTAIN OUR ON-GOING PRODUCT AND DEVELOPMENT IMPROVEMENT PROGRAM, VIKING-CIVES RESERVES THE RIGHT TO CHANGE EQUIPMENT & SPECIFICATION WITHOUT NOTICE.



22956 Highway 61 Morley, MO 63767 Phone: (573) 262-3545 Fax: (573) 262-3369

NOTES

A series of horizontal lines providing space for handwritten notes.



22956 Highway 61 Morley, MO 63767 Phone: (573) 262-3545 Fax: (573) 262-3369

***** LIMITED WARRANTY *****

Viking - Cives Midwest, Inc. warrants products of its manufacture against defects in workmanship and material for a period of one year from date of shipment to customer; and in consequence of this warranty, any component part or parts of such products proving defective within the above specified time will be repaired or replaced F.O.B. factory, providing such parts are returned, transportation prepaid, to the factory and found defective by **Viking - Cives Midwest, Inc.** This warranty will not apply to any product which shall have been repaired or altered outside of the **Viking - Cives Midwest, Inc.** factory in any way so as, in **Viking - Cives Midwest, Inc.** sole judgment, to affect its stability or reliability, nor which has been subjected to misuse, negligence or accident.

The obligations of **Viking - Cives Midwest, Inc.** under this limited warranty are limited to the replacement of defective parts as set forth above; such obligations are exclusive and in lieu of all other remedies, warranties, guarantees or liabilities, express or implied, with respect to each product delivered hereunder, arising by law or otherwise (including without limitation any obligation or liability of **Viking - Cives Midwest, Inc.**, arising from negligence or with respect to fitness for a particular purpose, merchantability, loss or use, revenue or profit, or any incidental, indirect, special or consequential damages or injuries; and all other remedies, warranties, guarantees, or liabilities are hereby expressly excluded and disclaimed. This limited warranty shall not be extended, altered, or varied except by a written instrument signed by **Viking - Cives Midwest, Inc.**

Viking - Cives Midwest, Inc. assumes no responsibility for engines, electrical equipment, or any other equipment and accessories not manufactured by **Viking - Cives Midwest, Inc.**

ORDERING PARTS

Delays and errors can be eliminated when ordering instructions are followed correctly.

1. Place orders direct with Viking - Cives Midwest, Inc. / nearest dealer.
2. State Company name, address, and postal zip code.
3. Give the exact model and serial number of the equipment/unit (stamped on the unit identification plate.)
4. Furnish part number, description and quantities required. *Note: An alpha designation in the Item ID column indicates a sub-component for that parent item. When placing parts orders reference the parent item to receive a complete assembly. Individual items can be ordered separately if required by ordering the alpha designated item number.*
5. Print or type order clearly. **Note: A purchase order is required for the warranty parts.**
6. Give specific shipping instructions.

VIKING - CIVES MIDWEST, INC. – 22956 Hwy 61 Morley, MO 63767
(573) 262-3545 Phone; (573) 262-3369 Fax



22956 Highway 61 Morley, MO 63767 Phone: (573) 262-3545 Fax: (573) 262-3369

WARRANTY REQUEST PROCEDURE

All repairs considered for warranty that are performed outside of Viking - Cives Midwest, Inc.; require prior written authorization from Viking - Cives Midwest, Inc. Failure to obtain written warranty authorization prior to repairs may result in the rejection of the warranty claim. To obtain warranty consideration one must provide Viking - Cives Midwest, Inc. with all required unit information including date of manufacture and serial numbers. In most cases this information is easily obtained from the "Shipped Unit Tag" (located in most cases inside the driver's side door) and/or individual unit serial tag.

(A) To obtain Parts Warranty Consideration:

- (1) Contact Viking - Cives Midwest, Inc. customer service to obtain a Return Goods Authorization (RGA) number. Any product arriving at Viking - Cives Midwest, Inc. without a RGA number will be rejected and returned to the sender at his or her own expense.
- (2) Goods are to be shipped prepaid to Viking - Cives Midwest, Inc. 22956 Highway 61 Morley, MO 63767. **All items should be clearly marked with the appropriate RGA number.**
- (3) When a replacement item is shipped to replace a defective part for warranty consideration the following additional steps will occur:
 - a) A Purchase order must be received for the replacement parts.
 - b) An invoice will be generated for the value of the replacement item(s).
 - c) The defective part(s) must be returned (prepaid) to Viking - Cives Midwest, Inc.
 - d) Upon receiving the defective part(s) Viking - Cives Midwest, Inc. will issue and process a Discrepant Material Report (DMR). Once the evaluation of the DMR report is complete and the parts are deemed warranty, a credit will be issued against the outstanding invoice. **If the part(s) are deemed Non-warranty the invoice will remain outstanding to be paid to Viking - Cives Midwest, Inc.** Any part(s) to be returned to the customer will be at his or her own expense.

(B) To obtain Labor Parts Repair Warranty Consideration:

In the event that repairs are required outside of Viking - Cives Midwest, Inc. facility that may be considered for warranty the following steps must occur. **Notification of Viking - Cives Midwest, Inc. customer service must take place prior to the start of any repairs.**

- (1) Contact Viking - Cives Midwest, Inc. customer service to obtain a Warranty Claim Form (WCF) and warranty authorization number.
- (2) Fill out all required WCF information and fax or mail the completed form to Viking - Cives Midwest, Inc., attention Customer Service Department.
- (3) Once the WCF report has been reviewed warranty authorization will be granted or denied. **NOTE: Viking - Cives Midwest, Inc. warranty labor rates will apply unless specifically determined otherwise.** Any part(s) involved in a WCF request must follow the Parts Warranty Consideration procedures.

For Customer Service and/or Parts requests please contact:

Service Department – DeWayne Stroder (573) 262-3545; (573) 262-3369 fax

