



22956 Highway 61 Morley, MO 63767 Phone: (573) 262-3545 Fax: (573) 262-3369

Owners Manual

VIKING-CIVES UNIVERSAL HITCHES





22956 Highway 61 Morley, MO 63767 Phone: (573) 262-3545 Fax: (573) 262-3369

***** LIMITED WARRANTY *****

Viking - Cives Midwest, Inc. warrants products of its manufacture against defects in workmanship and material for a period of one year from date of shipment to customer; and in consequence of this warranty, any component part or parts of such products proving defective within the above specified time will be repaired or replaced F.O.B. factory, providing such parts are returned, transportation prepaid, to the factory and found defective by **Viking - Cives Midwest, Inc.** This warranty will not apply to any product which shall have been repaired or altered outside of the **Viking - Cives Midwest, Inc.** factory in any way so as, in **Viking - Cives Midwest, Inc.** sole judgment, to affect its stability or reliability, nor which has been subjected to misuse, negligence or accident.

The obligations of **Viking - Cives Midwest, Inc.** under this limited warranty are limited to the replacement of defective parts as set forth above; such obligations are exclusive and in lieu of all other remedies, warranties, guarantees or liabilities, express or implied, with respect to each product delivered hereunder, arising by law or otherwise (including without limitation any obligation or liability of **Viking - Cives Midwest, Inc.**, arising from negligence or with respect to fitness for a particular purpose, merchantability, loss or use, revenue or profit, or any incidental, indirect, special or consequential damages or injuries; and all other remedies, warranties, guarantees, or liabilities are hereby expressly excluded and disclaimed. This limited warranty shall not be extended, altered, or varied except by a written instrument signed by **Viking - Cives Midwest, Inc.**

Viking - Cives Midwest, Inc. assumes no responsibility for engines, electrical equipment, or any other equipment and accessories not manufactured by **Viking - Cives Midwest, Inc.**

ORDERING PARTS

Delays and errors can be eliminated when ordering instructions are followed correctly.

1. Place orders direct with Viking - Cives Midwest, Inc. / nearest dealer.
2. State Company name, address, and postal zip code.
3. Give the exact model and serial number of the equipment/unit (stamped on the unit identification plate.)
4. Furnish part number, description and quantities required. *Note: An alpha designation in the Item ID column indicates a sub-component for that parent item. When placing parts orders reference the parent item to receive a complete assembly. Individual items can be ordered separately if required by ordering the alpha designated item number.*
5. Print or type order clearly. **Note: A purchase order is required for the warranty parts.**
6. Give specific shipping instructions.

VIKING - CIVES MIDWEST, INC. – 22956 Hwy 61 Morley, MO 63767
(573) 262-3545 Phone; (573) 262-3369 Fax



22956 Highway 61 Morley, MO 63767 Phone: (573) 262-3545 Fax: (573) 262-3369

WARRANTY REQUEST PROCEDURE

All repairs considered for warranty that are performed outside of Viking - Cives Midwest, Inc.; require prior written authorization from Viking - Cives Midwest, Inc. Failure to obtain written warranty authorization prior to repairs may result in the rejection of the warranty claim. To obtain warranty consideration one must provide Viking - Cives Midwest, Inc. with all required unit information including date of manufacture and serial numbers. In most cases this information is easily obtained from the "Shipped Unit Tag" (located in most cases inside the driver's side door) and/or individual unit serial tag.

(A) To obtain Parts Warranty Consideration:

- (1) Contact Viking - Cives Midwest, Inc. customer service to obtain a Return Goods Authorization (RGA) number. Any product arriving at Viking - Cives Midwest, Inc. without a RGA number will be rejected and returned to the sender at his or her own expense.
- (2) Goods are to be shipped prepaid to Viking - Cives Midwest, Inc. 22956 Highway 61 Morley, MO 63767. **All items should be clearly marked with the appropriate RGA number.**
- (3) When a replacement item is shipped to replace a defective part for warranty consideration the following additional steps will occur:
 - a) A Purchase order must be received for the replacement parts.
 - b) An invoice will be generated for the value of the replacement item(s).
 - c) The defective part(s) must be returned (prepaid) to Viking - Cives Midwest, Inc.
 - d) Upon receiving the defective part(s) Viking - Cives Midwest, Inc. will issue and process a Discrepant Material Report (DMR). Once the evaluation of the DMR report is complete and the parts are deemed warranty, a credit will be issued against the outstanding invoice. **If the part(s) are deemed Non-warranty the invoice will remain outstanding to be paid to Viking - Cives Midwest, Inc.** Any part(s) to be returned to the customer will be at his or her own expense.

(B) To obtain Labor Parts Repair Warranty Consideration:

In the event that repairs are required outside of Viking - Cives Midwest, Inc. facility that may be considered for warranty the following steps must occur. **Notification of Viking - Cives Midwest, Inc. customer service must take place prior to the start of any repairs.**

- (1) Contact Viking - Cives Midwest, Inc. customer service to obtain a Warranty Claim Form (WCF) and warranty authorization number.
- (2) Fill out all required WCF information and fax or mail the completed form to Viking - Cives Midwest, Inc., attention Customer Service Department.
- (3) Once the WCF report has been reviewed warranty authorization will be granted or denied. **NOTE: Viking - Cives Midwest, Inc. warranty labor rates will apply unless specifically determined otherwise.** Any part(s) involved in a WCF request must follow the Parts Warranty Consideration procedures.

For Customer Service and/or Parts requests please contact:

Service Department – DeWayne Stroder (573) 262-3545; (573) 262-3369 fax



22956 Highway 61 Morley, MO 63767 Phone: (573) 262-3545 Fax: (573) 262-3369

PERIODIC MAINTENANCE INSPECTION
DAILY INSPECTION AND LUBRICATION

Daily inspection along with periodic preventive maintenance will reduce the chance of any major repairs and down time during equipment use.

1. Check the fluid level in the hydraulic oil reservoir. If the sight indicated low oil level, add the appropriate amount of the specified hydraulic fluid. **Cold Weather Operation:** All equipment is designed to operate with hydraulic oil minimally warm. During cold weather conditions, it is recommended that the truck be run at idle with the pump engaged and circulating the oil through the system before operating equipment.
2. Check all components for loose and/or missing fasteners, if required tighten and/or replace.
3. Visually inspect all battery terminals and electrical connections, wires, switches, etc. for signs of corrosion, wear, loose and/or broken connections, etc. At the beginning of each shift review all lighting accessories to ensure proper working conditions, immediately replace any broken or non-functioning bulbs and/or lenses.
4. Visually inspect all hydraulic connections and hoses for cracks and/or leaks. Rupturing hoses may produce a high-pressure stream of hot hydraulic oil.
5. Check all cables and chains for excessive wear or damage.
6. Visually inspect plow units. Check cutting edges. If cutting edge has excessive wear remove and rotate, or if required, replace. **CAUTION:** Do not allow cutting edge to wear down to mounting angle. Any wear to the mounting angle may affect the operation and safety of the equipment. Replacement is costly.
7. At the beginning of each shift visually inspect all caution and warning decals. All decals should be complete and legible. If decals are not legible, clean them. If cleaning the decals does not make them legible, install new decals.



22956 Highway 61 Morley, MO 63767 Phone: (573) 262-3545 Fax: (573) 262-3369

GENERAL OPERATING INSTRUCTIONS

1. The operator should familiarize himself with all equipment prior to operation. The in-cab controls are placed at a comfortable reach of the operator, with an allowable amount of adjustment. If necessary, the controls can be adjusted for either driver or passenger use.
2. See cab control layout. All levers are clearly marked as to the equipment/function they control.
3. To raise the plow or wing, pull back on the appropriate control level, to lower the plow or wing, push the control level forward. **NOTE:** The in cab controls are proportional to the hydraulic valve, therefore the further the control lever is moved the faster the plow or wing will raise or lower.
4. Before putting any equipment into use, check for any worn, damaged or loose components, if necessary repair or replace. Listen for any unusual sounds, if necessary repair and/or replace worn or damaged parts.
5. Before operating any equipment be sure to read and fully understand all caution and safety warnings. Familiarize yourself and others with all caution/warning labels and their locations. Make sure all labels are complete and legible. Replace any labels that have become unreadable and/or missing. Replacement labels can be purchased directly from Viking-Cives Midwest, Inc.

REGISTRATION OF EQUIPMENT AND WARRANTY INFORMATION

Before using equipment check for damage. Report any damage to equipment at once to Viking-Cives Midwest, Inc. The warranty period becomes effective upon date of delivery of equipment unless other arrangements have been made with a Viking-Cives Midwest, Inc. distributor or Viking-Cives Midwest, Inc. The information required to register the equipment may be found on the serial number tag secured to the equipment.

A WORD ABOUT SAFETY

The equipment described in this manual is normally being operated in winter conditions with bad weather and snow & ice conditions. Due to these adverse operating conditions it is important that you the operator use good safety practices at all times to protect yourself, co-workers, and others when using the equipment.

It is not practical or possible to warn you about all the hazards associated with the operation and maintenance of this equipment. You use your own good judgment supplemented with the information found on the safety decals, instructions in this manual, your employer's safety programs, safety codes, local, state/provincial, and federal laws, rules and regulations.

When operating/performing maintenance on this equipment, trouble shooting equipment operations and loading or unloading the sanders/spreaders with material observe and obey all safety decals on the equipment and warnings listed in the manual. Failure to do this could result in serious injury or death to you or others.

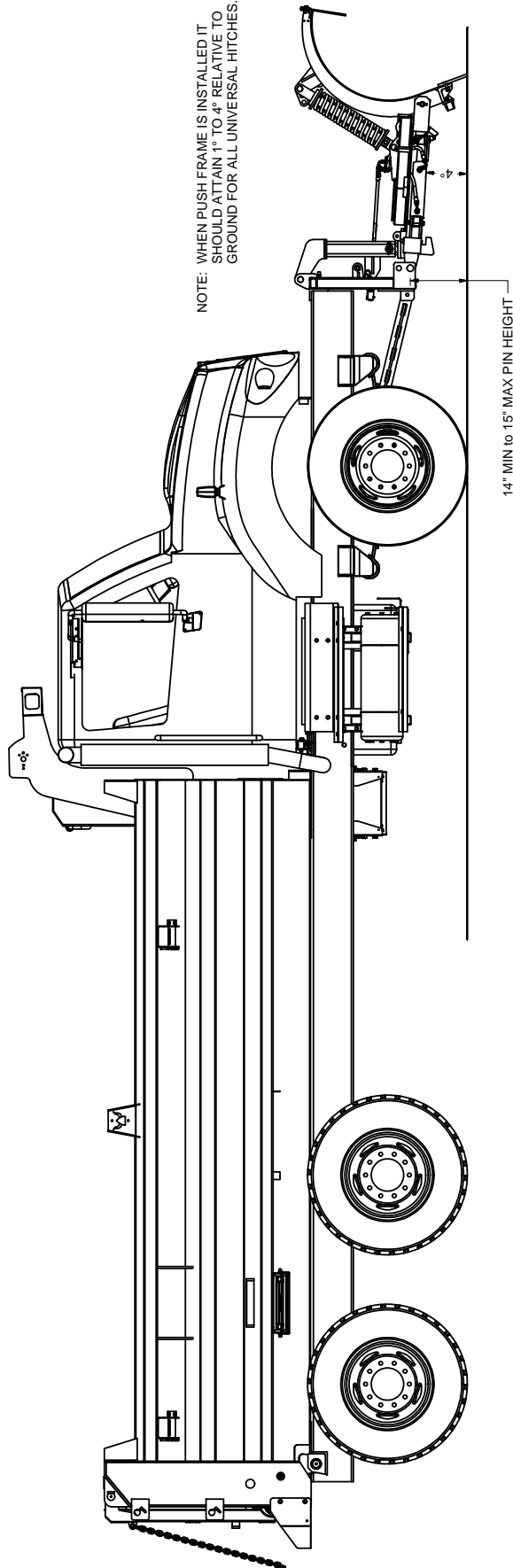
Remember at all times that as the operator you are responsible for the safe operation of this equipment and responsible for the safety of others. Good safety practices not only protect you but also protect the people around you.



22956 Highway 61 Morley, MO 63767 Phone: (573) 262-3545 Fax: (573) 262-3369

TABLE OF CONTENTS

<u>DESCRIPTION</u>	<u>PAGE NUMBER</u>
Warranty	2
Universal Hitch General Mounting Procedure	8
Universal Hitch Pin Height Requirements	9
Universal Tilt UQH Hitch Assembly Part #20301000/ S7016	10
Universal Tilt UQH Hitch Assembly Parts List	11
Universal Lo-Pro UQH Hitch Assembly Part#20301001/ S7006	12
Universal Lo-Pro UQH Hitch Assembly Parts List	13
Universal Tilt Pin Type Hitch Assembly Part #20301002/ S7011	14
Universal Tilt Pin Type Hitch Assembly Parts List	15
Universal Lo-Pro Pin Type Hitch Assembly Part #20301003/ S7001	16
Universal Lo-Pro Pin Type Hitch Assembly Parts List	17
Universal Tilt Flink Hitch Assembly Part #20301005/ S7014	18
Universal Tilt Flink Hitch Assembly Parts List	19
Universal Lo-Pro Flink Hitch Assembly Part #20301004/ S7004	20
Universal Lo-Pro Flink Hitch Assembly Parts List	21
Universal Lo-Pro Pin & Loop Hitch Assembly Part #20301015/ S7003	22
Universal Lo-Pro Pin & Loop Hitch Assembly Parts List	23
Universal Tiltpin & Loop Hitch Assembly Part #20301016/ S7013	24
Universal Tiltpin & Loop Hitch Assembly Parts List	25
Pin and Loop Receiver Assembly with Outer Pin Lugs for Use with Pin Type Hitches Part #202600042/ S7009	26
Universal Slide Hitch Assembly Part #20301058/ S7005	27
Universal Slide Hitch Assembly Parts List	28
Universal Slide Hitch Assembly MoDot Part #20301061/ S7005-1	29
Universal Slide Hitch Assembly MoDot Parts List	30
Drop Bar Style Hitch Assembly 36 5/16" Pin Centers Part #20301055/ S7020	31
Drop Bar Style Hitch Assembly 36 5/16" Pin Centers Parts List	32
Bumper Style Hitch with Drop Bar Flink Cross Channel Assembly Parts List	33
Drop Bar Style Hitch Assembly 30" Pin Centers Part #20301057/ S7023	34
Drop Bar Style Hitch Assembly 30" Pin Centers Parts List	35
Bumper Style Hitch with Drop Bar Flink Cross Channel Assembly Part #20301071/ S7024	36
Bolt On 12" Bumper Weldment Layout	37
Bolt On 12" Bumper Weldment Layout Parts List	38
Face Plate Truck Half Locking Pin Style Assembly Part #20301024/ S7036	39
Face Plate Truck Half Locking Pin Style Assembly Parts List	40
Universal Hitch Cylinders	41
Universal Hitch Cylinders Parts List	42



VIKING-CIVES MIDWEST UNIVERSAL HITCHES
-GENERAL MOUNTING PROCEDURE-

- STEP 1:** CENTER OPTIONAL BUMPER ANGLE (PART #200122027) ONTO EXISTING FRAME OR FRAME EXTENSIONS. NEXT ADD TWO PLATES LARGE ENOUGH TO ACCEPT THREE 5/8" BOLTS TO ACT AS SMALL CHEEK PLATES TO BE WELDED TO BUMPER ANGLE AND DRILL THROUGH SIDE OF FRAME RAIL. BOLT ANGLE AND CHEEK PLATES TO FRAME.
- STEP 2:** CENTER THE UNIVERSAL HITCH BETWEEN FRAME RAILS WITH AN APPROXIMATE PUSH HEIGHT CENTER OF 14" TO 15" FROM GROUND LEVEL; WELD HITCH TO BUMPER ANGLE.
- STEP 3:** LOCATE THE REAR CLIP ANGLE BRACKETS FROM OPTIONAL BRACE ARM KIT (PART # S7030) IN A SUITABLE LOCATION ON THE TRUCK FRAME BEHIND SPRING SHACKLE. NEXT, MARK AND GRILL FOUR(4) 11/16" DIAMETER HOLES IN EACH ANGLE CLIP. TRANSFER ANY EXISTING HOLES FROM TRUCK FRAME TO CLIPS WHERE POSSIBLE. BOLT IN PLACE WITH FOUR (4) 5/8" DIAMETER BOLTS. [NOTE: THE ANGLE CLIPS MUST BE SET ACCORDING TO THE FRAME AND SPRING WIDTHS, ALLOWING CLEARANCE FOR THE TRUST ARM BRACES, PRIOR TO FINAL WELDING.]
- STEP 4:** LOCATE CONNECTING LUGS ON THE BACK OF HITCH IN LINE WITH REAR ANGLE CLIPS AND THEN WELD IN PLACE.
- STEP 5:** MEASURE AND CUT BRACE ARM BARS FROM KIT (S7030) TO LENGTH. NEXT, MARK AND DRILL 13/16" DIAMETER HOLE IN BRACE BAR TO MATCH THE HOLES IN ANGLE CLIPS. BOLT IN PLACE WITH 3/4" DIAMETER BOLTS

TO MAINTAIN OUR ONGOING PRODUCT AND DEVELOPMENT IMPROVEMENT PROGRAM, VIKING-CIVES RESERVES THE RIGHT TO CHANGE EQUIPMENT & SPECIFICATION WITHOUT NOTICE. EQUIPMENT MAY NOT BE EXACTLY AS SHOWN. SOME COMPONENTS MAY BE OPTIONAL.



22956 Highway 61 ♦ Morley, MO 63767 ♦ Phone 573-262-3545 ♦ Fax 573-262-3369

PIN HEIGHT REQUIREMENTS

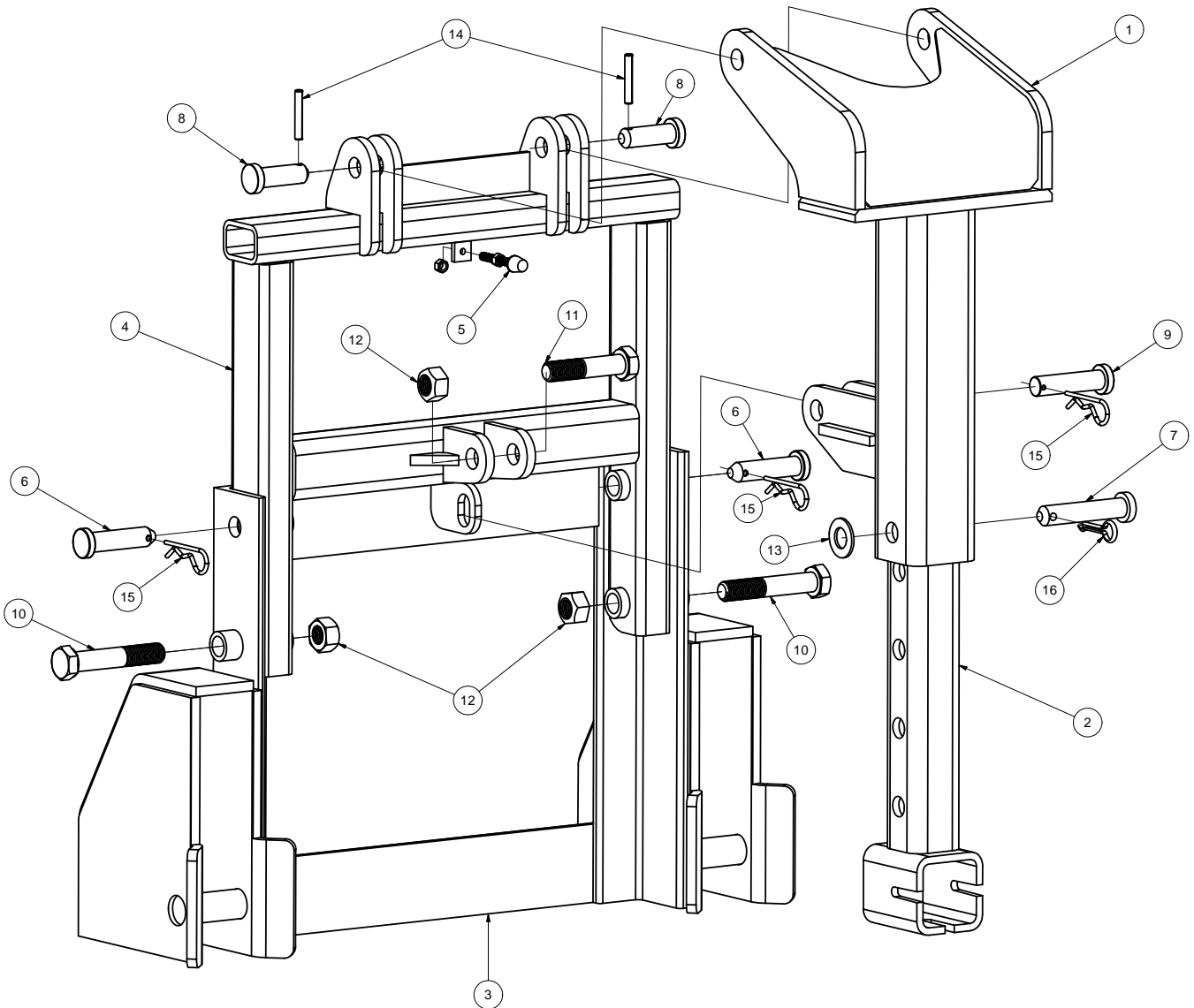
A. Angular push frame plows: 14" to 16"

1. MW plows
 - A. 36R10, 36R11, 36R12
 - B. 41R10, 41R11, 41R12
 - C. 48R10, 48R11, 48R12
2. MW One-way plows

B. Tubular push frame plows:

1. One-way @ 18" to 10"
2. FE @ 18" to 20"
3. J-plow @ 20" to 22"
4. Flex plow @ 18" to 20"

UNIVERSAL TILT UQH HITCH ASSEMBLY
PART #20301000
S7016



EQUIPMENT MAY NOT BE EXACTLY AS SHOWN. SOME COMPONENTS MAY BE OPTIONAL TO MAINTAIN OUR ON-GOING PRODUCT AND DEVELOPMENT IMPROVEMENT PROGRAM. VIKING-GIVES RESERVES THE RIGHT TO CHANGE EQUIPMENT & SPECIFICATION WITHOUT NOTICE.



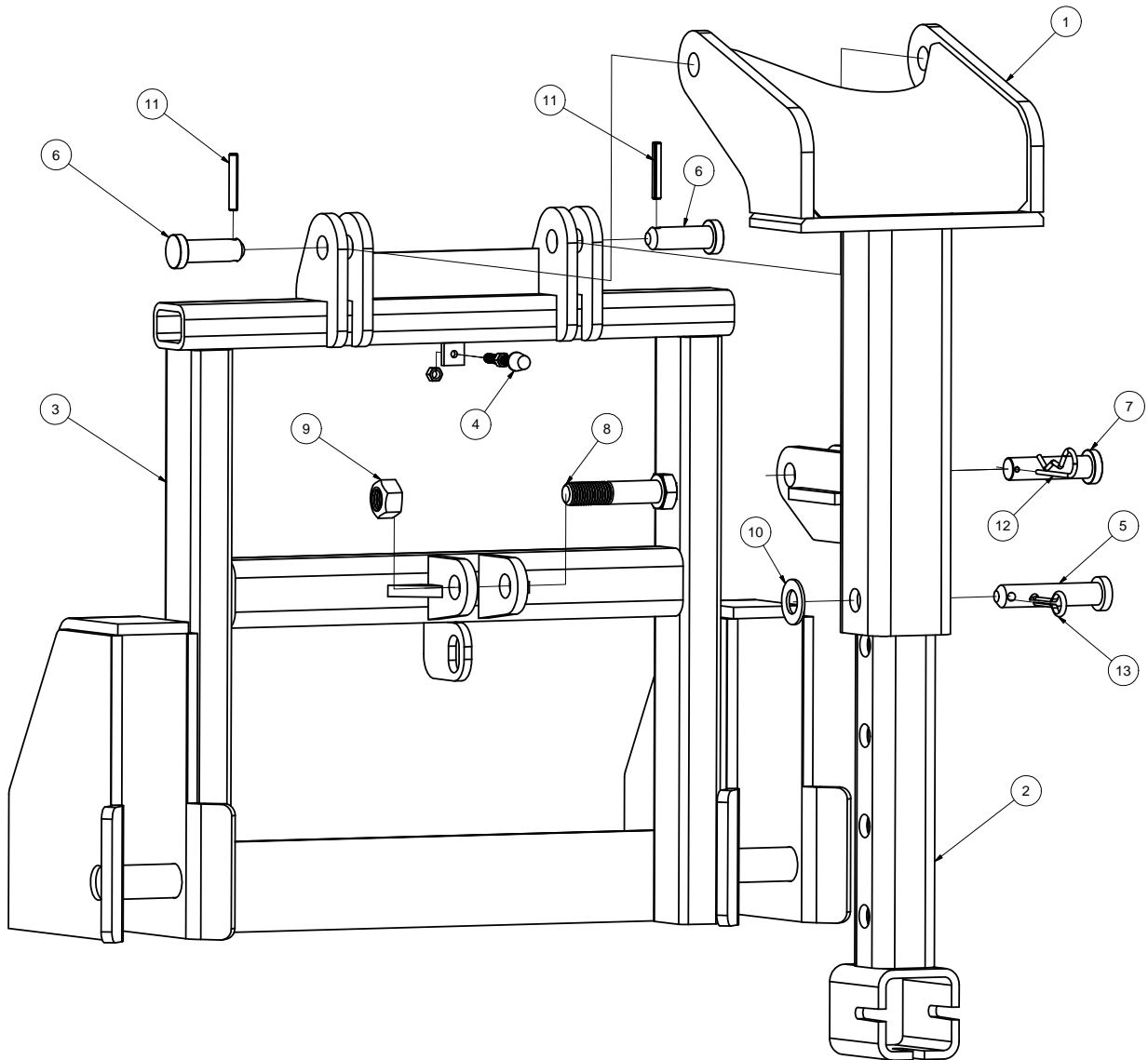
22956 HWY 61, MORLEY, MO 63767, PH: 573.262.3545, FX: 573.232.3369

**UNIVERSAL TILT UQH HITCH ASSEMBLY
PART #20301000
S7016**

ITEM	DRAWING NO.	ALT. ITEM NO.	DESCRIPTION	QTY
1	20303000		LIFT ARM WELDMENT	1
2	20303001		INNER ARM WELDMENT	1
3	20303003		TILT UQH LOWER WELDMENT	1
4	20303004		UPPER TILT WELDMENT	1
5	20427000		CYLINDER RETAINING STOP	1
6	20900004		PIN 1.000 DIA X 3.406	2
7	20P054		LIFT ARM PIN 1" X 5"	1
8	20P148A		PIN 1 X 3	2
9	3SK3410		PIN 1" X 4"	1
10	HW40A-1644		BOLT HEX 1 X 5 1/2 UNC ZINC	2
11	HW40A-1636	81022	BOLT HEX 1 X 4 1/2 UNC ZINC	1
12	HW30E-16		NUT HEX 1 UNC TOPLOCK ZINC	3
13	HW14A-16	81013A	FLATWASHER SAE 1" ZINC	1
14	HW13C-1240		ROLL PIN 3/8 X 2 1/2 ZINC	2
15	HW13P-7GA56	80536	COTTER HAIRPIN 3/16" X 3 3/4" ZINC	3
16	HW13U-1020	80536A	CLINCH PIN 5/16 X 1 1/4 ZINC	1

EQUIPMENT MAY NOT BE EXACTLY AS SHOWN. SOME COMPONENTS MAY BE OPTIONAL
TO MAINTAIN OUR ON-GOING PRODUCT AND DEVELOPMENT IMPROVEMENT PROGRAM, VIKING-GIVES RESERVES THE RIGHT TO CHANGE EQUIPMENT & SPECIFICATION WITHOUT NOTICE.

UNIVERSAL LO-PRO UQH HITCH ASSEMBLY
PART #20301001
S7006



EQUIPMENT MAY NOT BE EXACTLY AS SHOWN. SOME COMPONENTS MAY BE OPTIONAL
TO MAINTAIN OUR ON-GOING PRODUCT AND DEVELOPMENT IMPROVEMENT PROGRAM, VIKING-GIVES RESERVES THE RIGHT TO CHANGE EQUIPMENT & SPECIFICATION WITHOUT NOTICE.



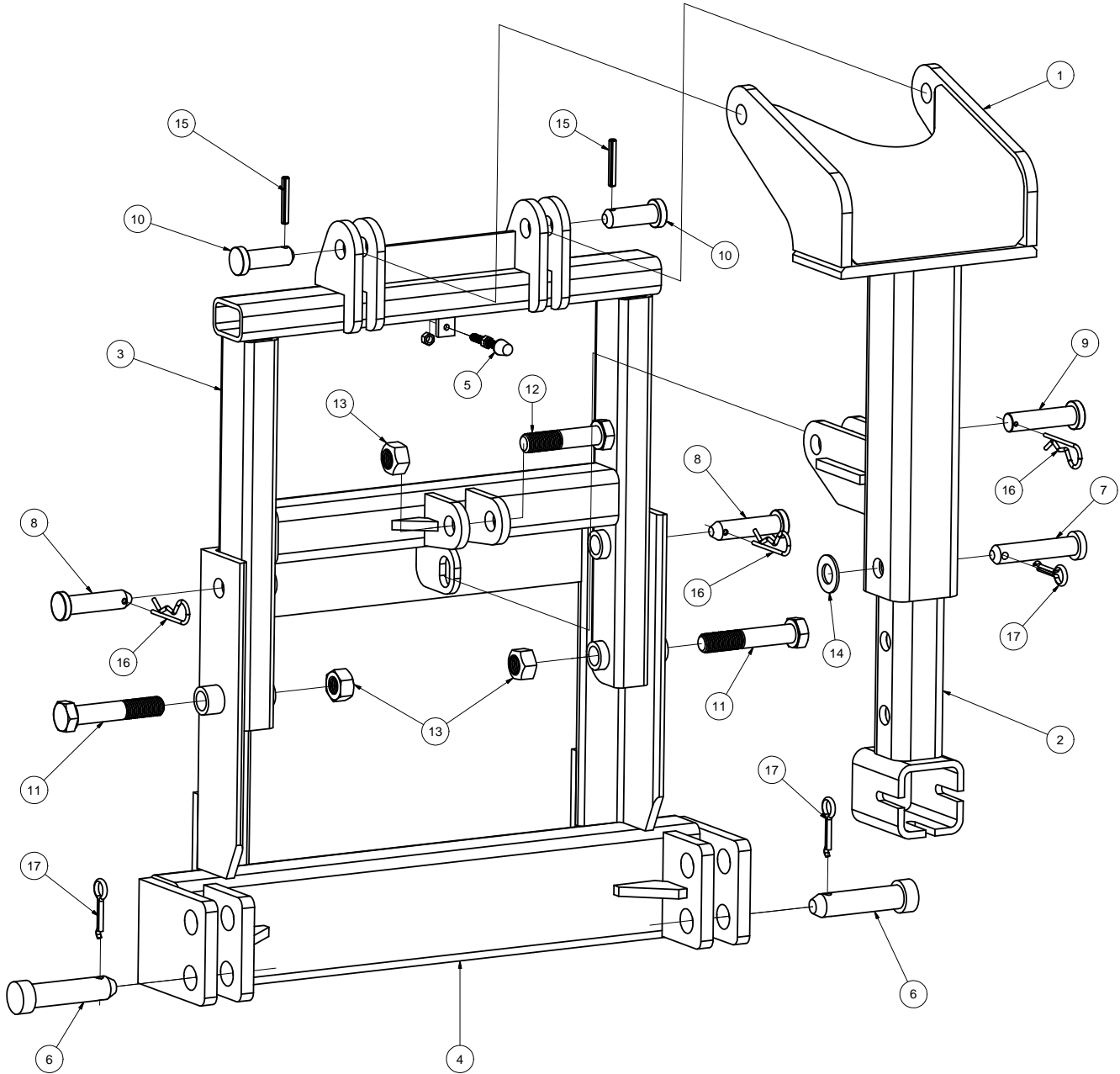
22956 HWY 61, MORLEY, MO 63767, PH: 573.262.3545, FX: 573.232.3369

**UNIVERSAL LO-PRO UQH HITCH ASSEMBLY
PART #20301001
S7006**

ITEM	DRAWING NO.	ALT. ITEM NO.	DESCRIPTION	QTY
1	20303000		LIFT ARM WELDMENT	1
2	20303001		INNER ARM WELDMENT	1
3	20303006		NEW LOW-PRO UQH HITCH	1
4	20427000		CYLINDER RETAINING STOP	1
5	20P054		LIFT ARM PIN 1" X 5"	1
6	20P148A		PIN 1 X 3	2
7	3SK3410		PIN 1" X 4"	1
8	HW40A-1636	81022	BOLT HEX 1 X 4 1/2 UNC ZINC	1
9	HW30E-16		NUT HEX 1 UNC TOPLOCK ZINC	1
10	HW14A-16	81013A	FLATWASHER SAE 1" ZINC	1
11	HW13C-1240		ROLL PIN 3/8 X 2 1/2 ZINC	2
12	HW13P-7GA56	80536	COTTER HAIRPIN 3/16" X 3 3/4" ZINC	1
13	HW13U-1020	80536A	CLINCH PIN 5/16 X 1 1/4 ZINC	1

EQUIPMENT MAY NOT BE EXACTLY AS SHOWN. SOME COMPONENTS MAY BE OPTIONAL
TO MAINTAIN OUR ON-GOING PRODUCT AND DEVELOPMENT IMPROVEMENT PROGRAM, VIKING-CIVES RESERVES THE RIGHT TO CHANGE EQUIPMENT & SPECIFICATION WITHOUT NOTICE.

UNIVERSAL TILT PIN TYPE HITCH ASSEMBLY
PART #20301002
S7011



EQUIPMENT MAY NOT BE EXACTLY AS SHOWN. SOME COMPONENTS MAY BE OPTIONAL.
TO MAINTAIN OUR ON-GOING PRODUCT AND DEVELOPMENT IMPROVEMENT PROGRAM, VIKING-GIVES RESERVES THE RIGHT TO CHANGE EQUIPMENT & SPECIFICATION WITHOUT NOTICE.



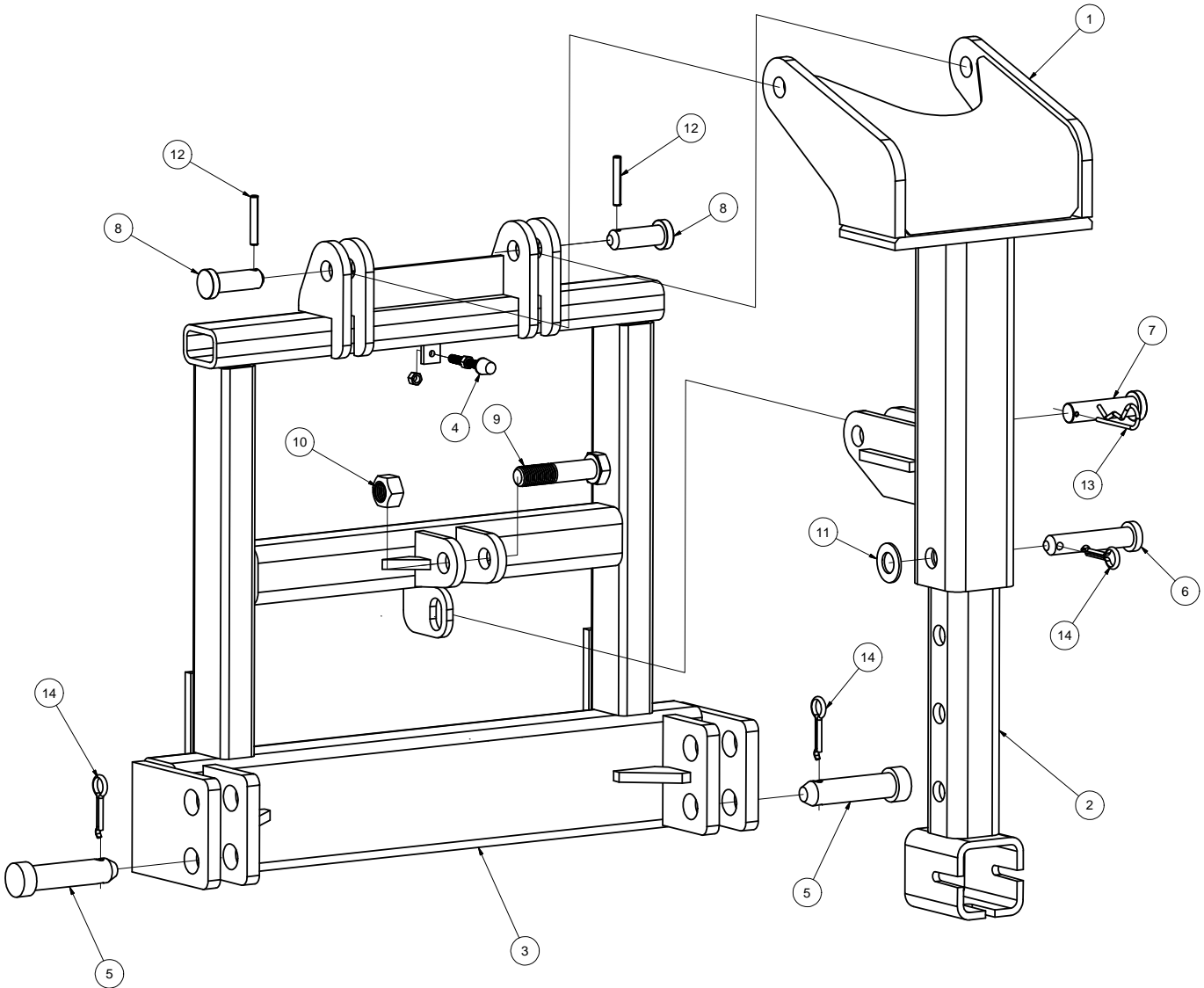
22956 HWY 61, MORLEY, MO 63767, PH: 573.262.3545, FX: 573.232.3369

UNIVERSAL TILT PIN TYPE HITCH ASSEMBLY
PART #20301002
S7011

ITEM	DRAWING NO.	ALT. ITEM NO.	DESCRIPTION	QT
1	20303000		LIFT ARM WELDMENT	1
2	20303001		INNER ARM WELDMENT	1
3	20303004		UPPER TILT WELDMENT	1
4	20303007		LOWER TILT SECTION PIN TYPE	1
5	20427000		CYLINDER RETAINING STOP	1
6	20P010		PIN 1 1/4 X 4 3/8 UH	2
7	20P054		LIFT ARM PIN 1" X 5"	1
8	20900004		PIN 1.000 DIA X 3.406	2
9	3SK3410		PIN 1" X 4"	1
10	20P148A		PIN 1 X 3	2
11	HW40A-1644		BOLT HEX 1 X 5 1/2 UNC ZINC	2
12	HW40A-1636	81022	BOLT HEX 1 X 4 1/2 UNC ZINC	1
13	HW30E-16		NUT HEX 1 UNC TOPLOCK ZINC	3
14	HW14A-16	81013A	FLATWASHER SAE 1" ZINC	1
15	HW13C-1240		ROLL PIN 3/8 X 2 1/2 ZINC	2
16	HW13P-7GA56	80536	COTTER HAIRPIN 3/16" X 3 3/4" ZINC	3
17	HW13U-1020	80536A	CLINCH PIN 5/16 X 1 1/4 ZINC	3

EQUIPMENT MAY NOT BE EXACTLY AS SHOWN. SOME COMPONENTS MAY BE OPTIONAL
TO MAINTAIN OUR ON-GOING PRODUCT AND DEVELOPMENT IMPROVEMENT PROGRAM, VIKING-GIVES RESERVES THE RIGHT TO CHANGE EQUIPMENT & SPECIFICATION WITHOUT NOTICE.

UNIVERSAL LO-PRO PIN TYPE HITCH ASSEMBLY
PART #20301003
S7001



EQUIPMENT MAY NOT BE EXACTLY AS SHOWN. SOME COMPONENTS MAY BE OPTIONAL.
TO MAINTAIN OUR ON-GOING PRODUCT AND DEVELOPMENT IMPROVEMENT PROGRAM, VIKING-CIVES RESERVES THE RIGHT TO CHANGE EQUIPMENT & SPECIFICATION WITHOUT NOTICE.



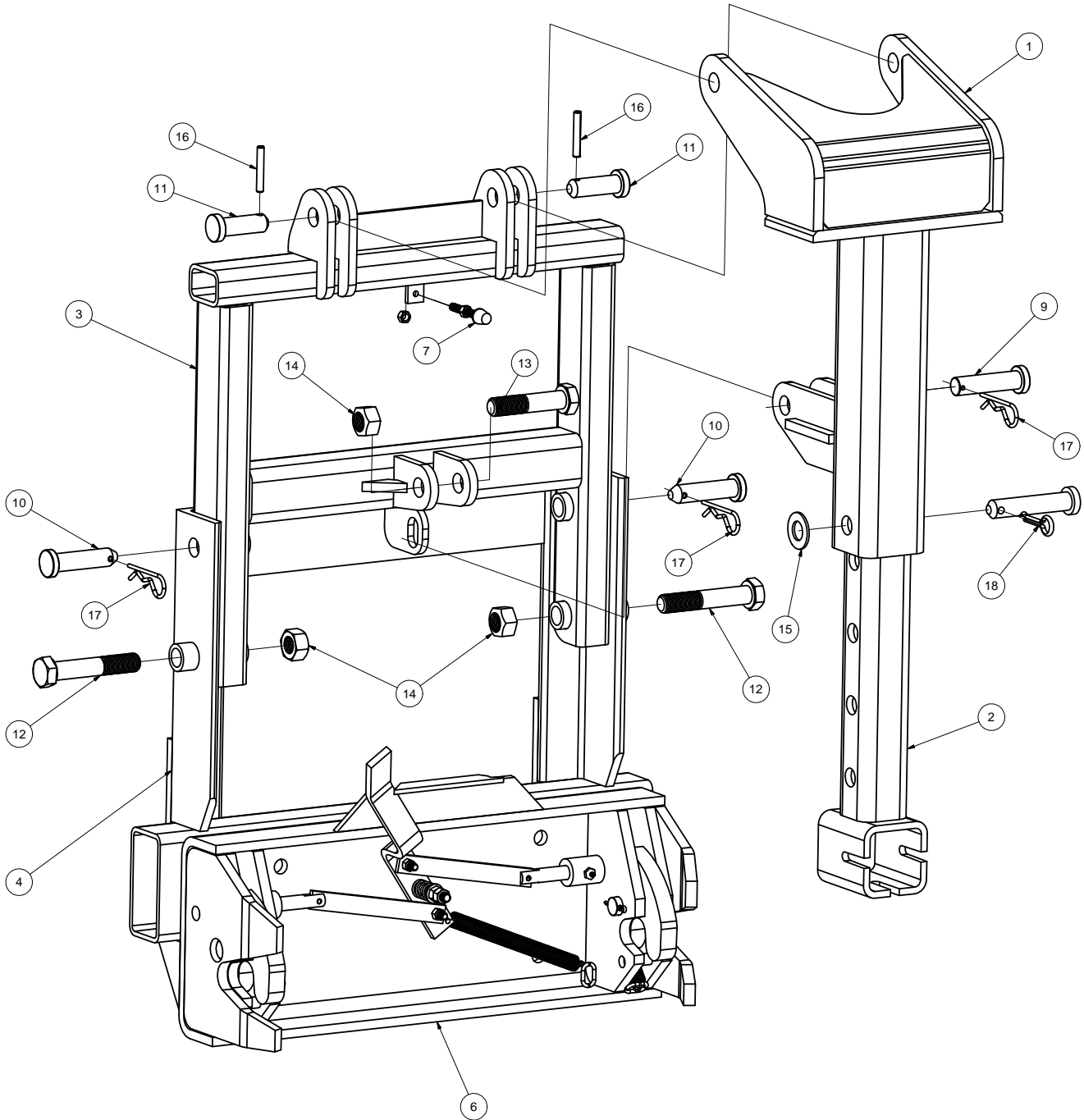
22956 HWY 61, MORLEY, MO 63767, PH: 573.262.3545, FX: 573.232.3369

UNIVERSAL LO-PRO PIN TYPE HITCH ASSEMBLY
 PART #20301003
 S7001

ITEM	DRAWING NO.	ALT. ITEM NO.	DESCRIPTION	QTY
1	20303000		LIFT ARM WELDMENT	1
2	20303001		INNER ARM WELDMENT	1
3	20303005		LOW-PRO PIN TYPE WELDMENT	1
4	20427000		CYLINDER RETAINING STOP	1
5	20P010		PIN 1 1/4 X 4 3/8 UH	2
6	20P054		LIFT ARM PIN 1" X 5"	1
7	3SK3410		PIN 1" X 4"	1
8	20P148A		PIN 1 X 3	2
9	HW40A-1636	81022	BOLT HEX 1 X 4 1/2 UNC ZINC	1
10	HW30E-16		NUT HEX 1 UNC TOPLOCK ZINC	1
11	HW14A-16	81013A	FLATWASHER SAE 1" ZINC	1
12	HW13C-1240		ROLL PIN 3/8 X 2 1/2 ZINC	2
13	HW13P-7GA56	80536	COTTER HAIRPIN 3/16" X 3 3/4" ZINC	1
14	HW13U-1020	80536A	CLINCH PIN 5/16 X 1 1/4 ZINC	3

EQUIPMENT MAY NOT BE EXACTLY AS SHOWN. SOME COMPONENTS MAY BE OPTIONAL
 TO MAINTAIN OUR ON-GOING PRODUCT AND DEVELOPMENT IMPROVEMENT PROGRAM, VIKING-GIVES RESERVES THE RIGHT TO CHANGE EQUIPMENT & SPECIFICATION WITHOUT NOTICE.

UNIVERSAL TILT FLINK HITCH ASSEMBLY
PART #20301005
S7014



EQUIPMENT MAY NOT BE EXACTLY AS SHOWN. SOME COMPONENTS MAY BE OPTIONAL TO MAINTAIN OUR ON-GOING PRODUCT AND DEVELOPMENT IMPROVEMENT PROGRAM, VIKING-GIVES RESERVES THE RIGHT TO CHANGE EQUIPMENT & SPECIFICATION WITHOUT NOTICE.



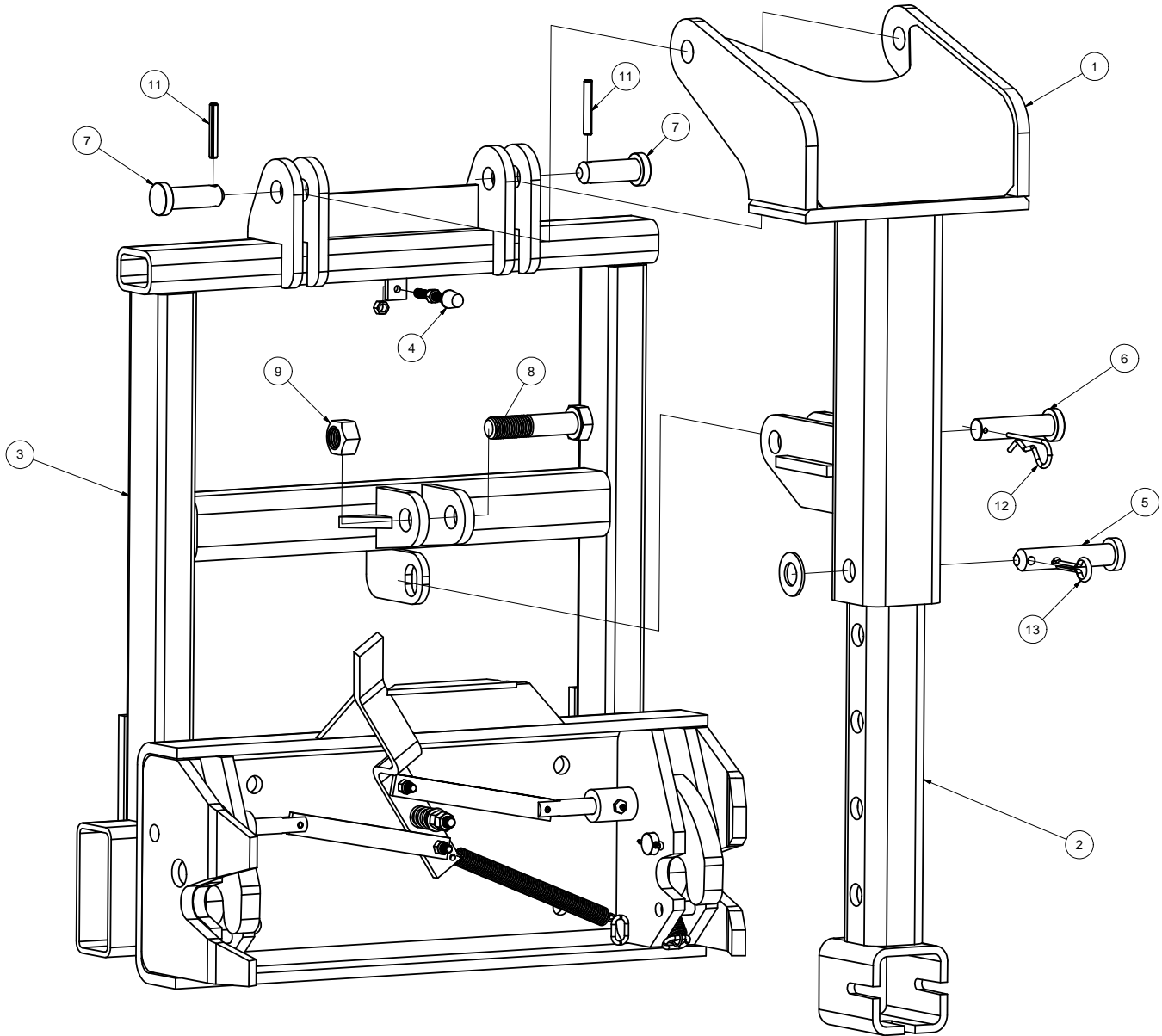
22956 HWY 61, MORLEY, MO 63767, PH: 573.262.3545, FX: 573.232.3369

**UNIVERSAL TILT FLINK HITCH ASSEMBLY
PART #20301005
S7014**

ITEM	DRAWING NO.	ALT. ITEM NO.	DESCRIPTION	QT
1	20303000		LIFT ARM WELDMENT	1
2	20303001		INNER ARM WELDMENT	1
3	20303004		UPPER TILT WELDMENT	1
4	20303013		LOWER TILT FLINK OR QUICK LOOP WELD'T	1
5	20312013		LO-PRO FLINK HITCH GUSSET	3
6	2FLKSWIV-T		FLINK QUICK LINK RECEIVER	1
7	20427000		CYLINDER RETAINING STOP	1
8	20P054		LIFT ARM PIN 1" X 5"	1
9	3SK3410		PIN 1" X 4"	1
10	20900004		PIN 1.000 DIA X 3.406	2
11	20P148A		PIN 1 X 3	2
12	HW40A-1644		BOLT HEX 1 X 5 1/2 UNC ZINC	2
13	HW40A-1636	81022	BOLT HEX 1 X 4 1/2 UNC ZINC	1
14	HW30E-16		NUT HEX 1 UNC TOPLOCK ZINC	3
15	HW14A-16	81013A	FLATWASHER SAE 1" ZINC	1
16	HW13C-1240		ROLL PIN 3/8 X 2 1/2 ZINC	2
17	HW13P-7GA56	80536	COTTER HAIRPIN 3/16" X 3 3/4" ZINC	3
18	HW13U-1020	80536A	CLINCH PIN 5/16 X 1 1/4 ZINC	1

EQUIPMENT MAY NOT BE EXACTLY AS SHOWN. SOME COMPONENTS MAY BE OPTIONAL
TO MAINTAIN OUR ON-GOING PRODUCT AND DEVELOPMENT IMPROVEMENT PROGRAM, VIKING-GIVES RESERVES THE RIGHT TO CHANGE EQUIPMENT & SPECIFICATION WITHOUT NOTICE.

UNIVERSAL LO-PRO FLINK HITCH ASSEMBLY
PART #20301004
S7004



EQUIPMENT MAY NOT BE EXACTLY AS SHOWN. SOME COMPONENTS MAY BE OPTIONAL TO MAINTAIN OUR ON-GOING PRODUCT AND DEVELOPMENT IMPROVEMENT PROGRAM, VIKING-GIVES RESERVES THE RIGHT TO CHANGE EQUIPMENT & SPECIFICATION WITHOUT NOTICE.



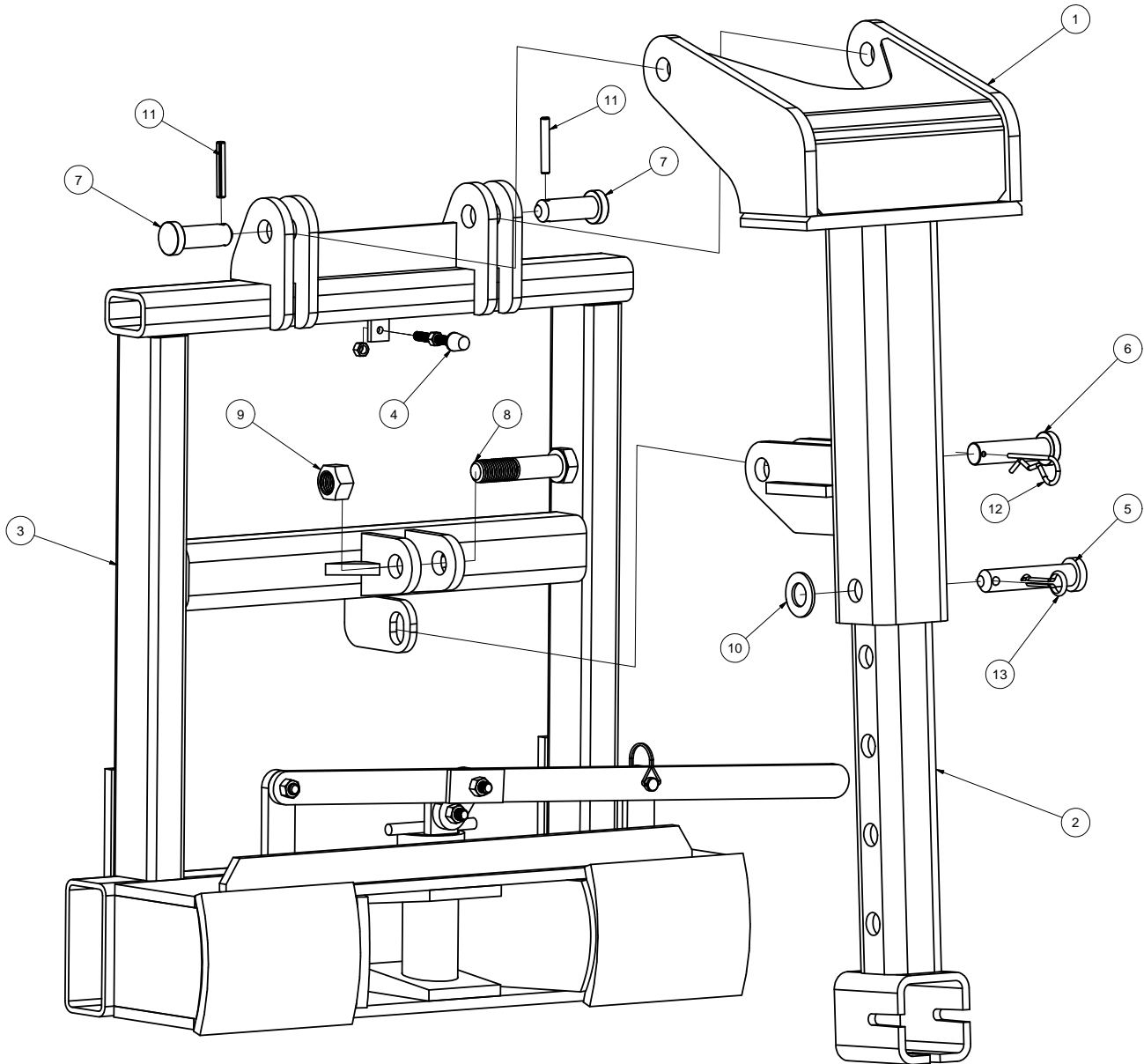
22956 HWY 61, MORLEY, MO 63767, PH: 573.262.3545, FX: 573.232.3369

UNIVERSAL LO-PRO FLINK HITCH ASSEMBLY
 PART #20301004
 S7004

ITEM	DRAWING NO.	ALT. ITEM NO.	DESCRIPTION	QTY
1	20303000		LIFT ARM WELDMENT	1
2	20303001		INNER ARM WELDMENT	1
3	20303056		LO PRO FLINK HITCH WELDMENT	1
4	20427000		CYLINDER RETAINING STOP	1
5	20P054		LIFT ARM PIN 1" X 5"	1
6	3SK3410		PIN 1" X 4"	1
7	20P148A		PIN 1 X 3	2
8	HW40A-1636	81022	BOLT HEX 1 X 4 1/2 UNC ZINC	1
9	HW30E-16		NUT HEX 1 UNC TOPLOCK ZINC	1
10	HW14A-16	81013A	FLATWASHER SAE 1" ZINC	1
11	HW13C-1240		ROLL PIN 3/8 X 2 1/2 ZINC	2
12	HW13P-7GA56	80536	COTTER HAIRPIN 3/16" X 3 3/4" ZINC	1
13	HW13U-1020	80536A	CLINCH PIN 5/16 X 1 1/4 ZINC	1

EQUIPMENT MAY NOT BE EXACTLY AS SHOWN. SOME COMPONENTS MAY BE OPTIONAL
 TO MAINTAIN OUR ON-GOING PRODUCT AND DEVELOPMENT IMPROVEMENT PROGRAM, VIKING-GIVES RESERVES THE RIGHT TO CHANGE EQUIPMENT & SPECIFICATION WITHOUT NOTICE.

UNIVERSAL LO-PRO PIN & LOOP HITCH ASSEMBLY
PART #20301015
S7003



EQUIPMENT MAY NOT BE EXACTLY AS SHOWN. SOME COMPONENTS MAY BE OPTIONAL
TO MAINTAIN OUR ON-GOING PRODUCT AND DEVELOPMENT IMPROVEMENT PROGRAM, VIKING-GIVES RESERVES THE RIGHT TO CHANGE EQUIPMENT & SPECIFICATION WITHOUT NOTICE.



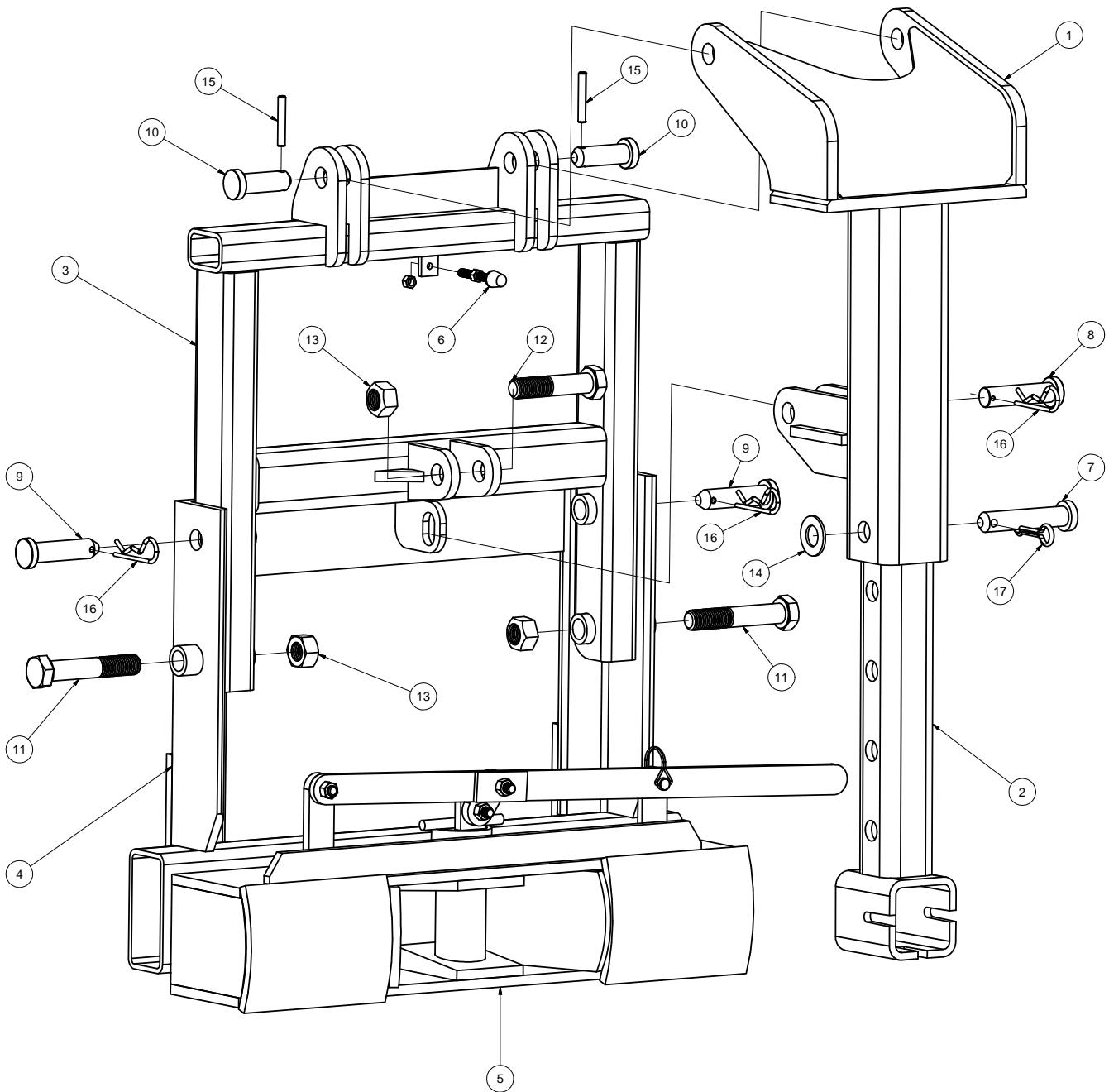
22956 HWY 61, MORLEY, MO 63767, PH: 573.262.3545, FX: 573.232.3369

**UNIVERSAL LO-PRO PIN & LOOP HITCH ASSEMBLY
PART #20301015
S7003**

ITEM	DRAWING NO.	ALT. ITEM NO.	DESCRIPTION	QTY
1	20303000		LIFT ARM WELDMENT	1
2	20303001		INNER ARM WELDMENT	1
3	20303065		LO PRO QUICK LOOP WELD ON WELDMENT	1
4	20427000		CYLINDER RETAINING STOP	1
5	20P054		LIFT ARM PIN 1" X 5"	1
6	3SK3410		PIN 1" X 4"	1
7	20P148A		PIN 1 X 3	2
8	HW40A-1636	81022	BOLT HEX 1 X 4 1/2 UNC ZINC	1
9	HW30E-16		NUT HEX 1 UNC TOPLOCK ZINC	1
10	HW14A-16	81013A	FLATWASHER SAE 1" ZINC	1
11	HW13C-1240		ROLL PIN 3/8 X 2 1/2 ZINC	2
12	HW13P-7GA56	80536	COTTER HAIRPIN 3/16" X 3 3/4" ZINC	1
13	HW13U-1020	80536A	CLINCH PIN 5/16 X 1 1/4 ZINC	1

EQUIPMENT MAY NOT BE EXACTLY AS SHOWN. SOME COMPONENTS MAY BE OPTIONAL
TO MAINTAIN OUR ON-GOING PRODUCT AND DEVELOPMENT IMPROVEMENT PROGRAM, VIKING-GIVES RESERVES THE RIGHT TO CHANGE EQUIPMENT & SPECIFICATION WITHOUT NOTICE.

UNIVERSAL TILT PIN & LOOP HITCH ASSEMBLY
PART #20301016
S7013



EQUIPMENT MAY NOT BE EXACTLY AS SHOWN. SOME COMPONENTS MAY BE OPTIONAL
TO MAINTAIN OUR ON-GOING PRODUCT AND DEVELOPMENT IMPROVEMENT PROGRAM, VIKING-CIVES RESERVES THE RIGHT TO CHANGE EQUIPMENT & SPECIFICATION WITHOUT NOTICE.



22956 HWY 61, MORLEY, MO 63767, PH: 573.262.3545, FX: 573.232.3369

**UNIVERSAL TILT PIN & LOOP HITCH ASSEMBLY
PART #20301016
S7013**

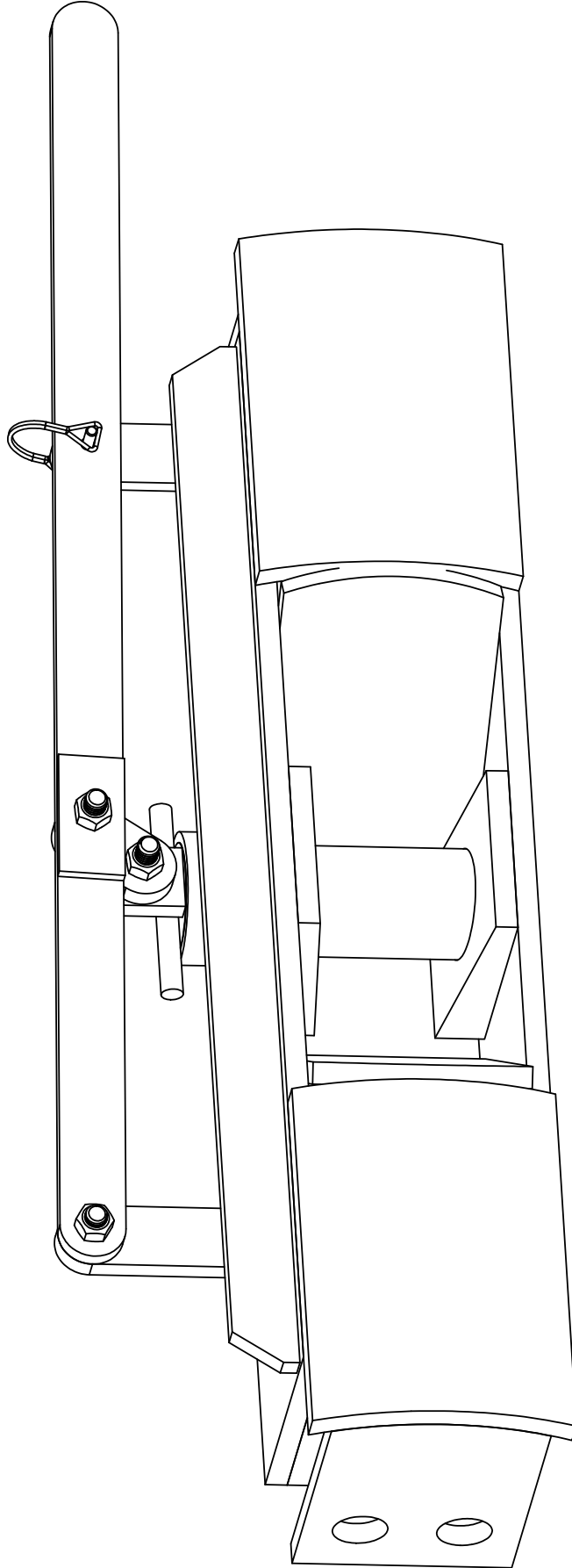
ITEM	DRAWING NO.	ALT. ITEM NO.	DESCRIPTION	QTY
1	20303000		LIFT ARM WELDMENT	1
2	20303001		INNER ARM WELDMENT	1
3	20303004		UPPER TILT WELDMENT	1
4	20303013		LOWER TILT FLINK OR QUICK LOOP WELD'T	1
5	202600042A		RECIEVER PIN & LOOP W/O LUGS	1
6	20427000		CYLINDER RETAINING STOP	1
7	20P054		LIFT ARM PIN 1" X 5"	1
8	3SK3410		PIN 1" X 4"	1
9	20900004		PIN 1.000 DIA X 3.406	2
10	20P148A		PIN 1 X 3	2
11	HW40A-1644		BOLT HEX 1 X 5 1/2 UNC ZINC	2
12	HW40A-1636	81022	BOLT HEX 1 X 4 1/2 UNC ZINC	1
13	HW30E-16		NUT HEX 1 UNC TOPLOCK ZINC	3
14	HW14A-16	81013A	FLATWASHER SAE 1" ZINC	1
15	HW13C-1240		ROLL PIN 3/8 X 2 1/2 ZINC	2
16	HW13P-7GA56	80536	COTTER HAIRPIN 3/16" X 3 3/4" ZINC	3
17	HW13U-1020	80536A	CLINCH PIN 5/16 X 1 1/4 ZINC	1

EQUIPMENT MAY NOT BE EXACTLY AS SHOWN. SOME COMPONENTS MAY BE OPTIONAL
TO MAINTAIN OUR ON-GOING PRODUCT AND DEVELOPMENT IMPROVEMENT PROGRAM, VIKING-GIVES RESERVES THE RIGHT TO CHANGE EQUIPMENT & SPECIFICATION WITHOUT NOTICE.



22956 HWY 61, MORLEY, MO 63767, PH: 573.262.3545, FX: 573.232.3369

**PIN AND LOOP RECEIVER ASSEMBLY WITH OUTER PIN LUGS
FOR USE WITH PIN TYPE HITCHES
PART #202600042
S7009**



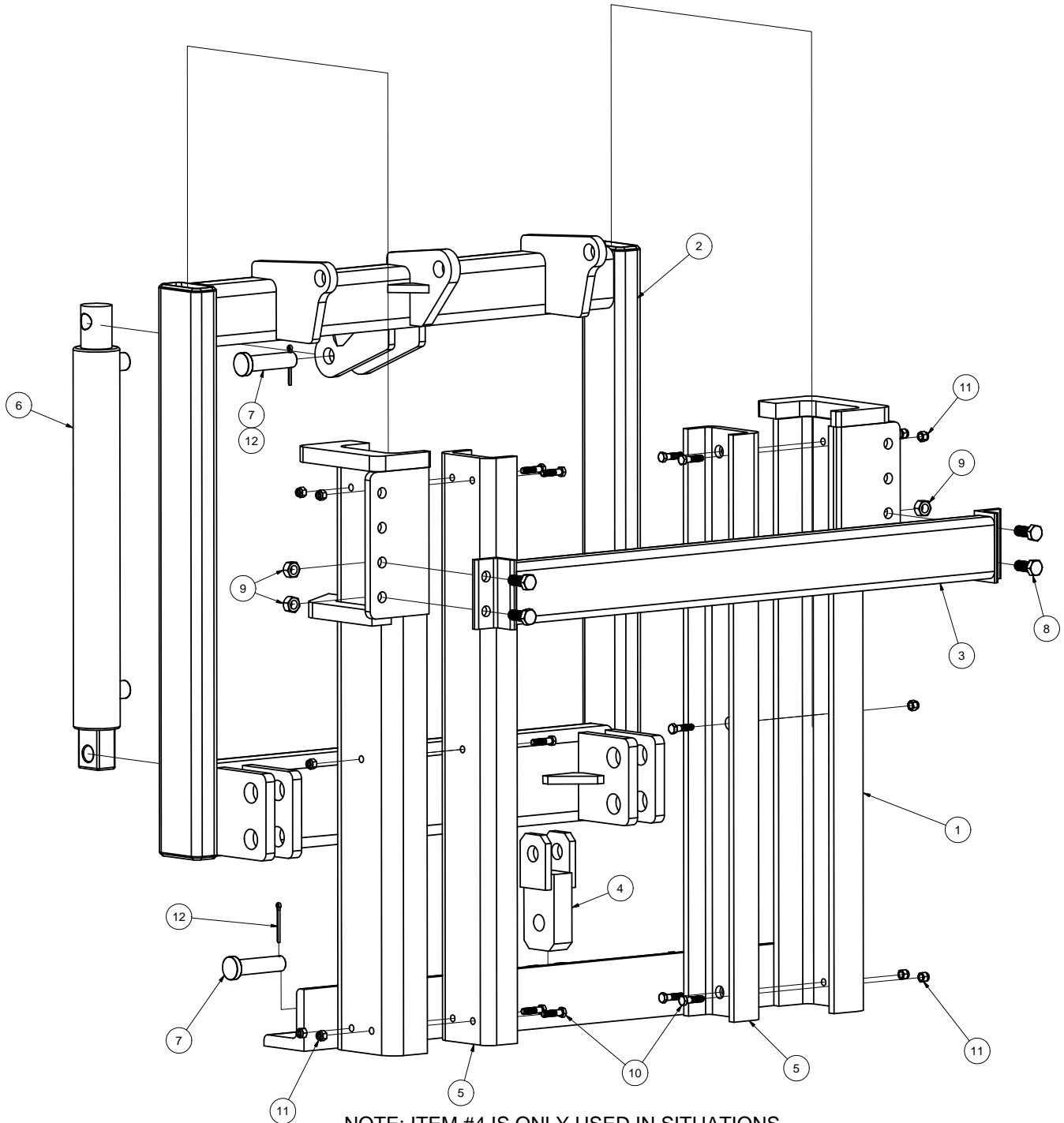
TO MAINTAIN OUR ONGOING PRODUCT AND DEVELOPMENT IMPROVEMENT PROGRAM, VIKING CIVES RESERVES THE RIGHT TO CHANGE EQUIPMENT & SPECIFICATION WITHOUT NOTICE.



22956 Highway 61 Morley, MO 63767 Phone: (573) 262-3545 Fax: (573) 262-3369

THIS PAGE INTENTIONALLY LEFT BLANK

UNIVERSAL SLIDE HITCH ASSEMBLY 30 1/2" PIN CENTERS
PART #20301058
S7005



**NOTE: ITEM #4 IS ONLY USED IN SITUATIONS
WHERE PIN HEIGHT IS GREATER THAN 17"**

EQUIPMENT MAY NOT BE EXACTLY AS SHOWN. SOME COMPONENTS MAY BE OPTIONAL TO MAINTAIN OUR ON-GOING PRODUCT AND DEVELOPMENT IMPROVEMENT PROGRAM. VIKING-GIVES RESERVES THE RIGHT TO CHANGE EQUIPMENT & SPECIFICATION WITHOUT NOTICE.



22956 HWY 61, MORLEY, MO 63767, PH: 573.262.3545, FX: 573.232.3369

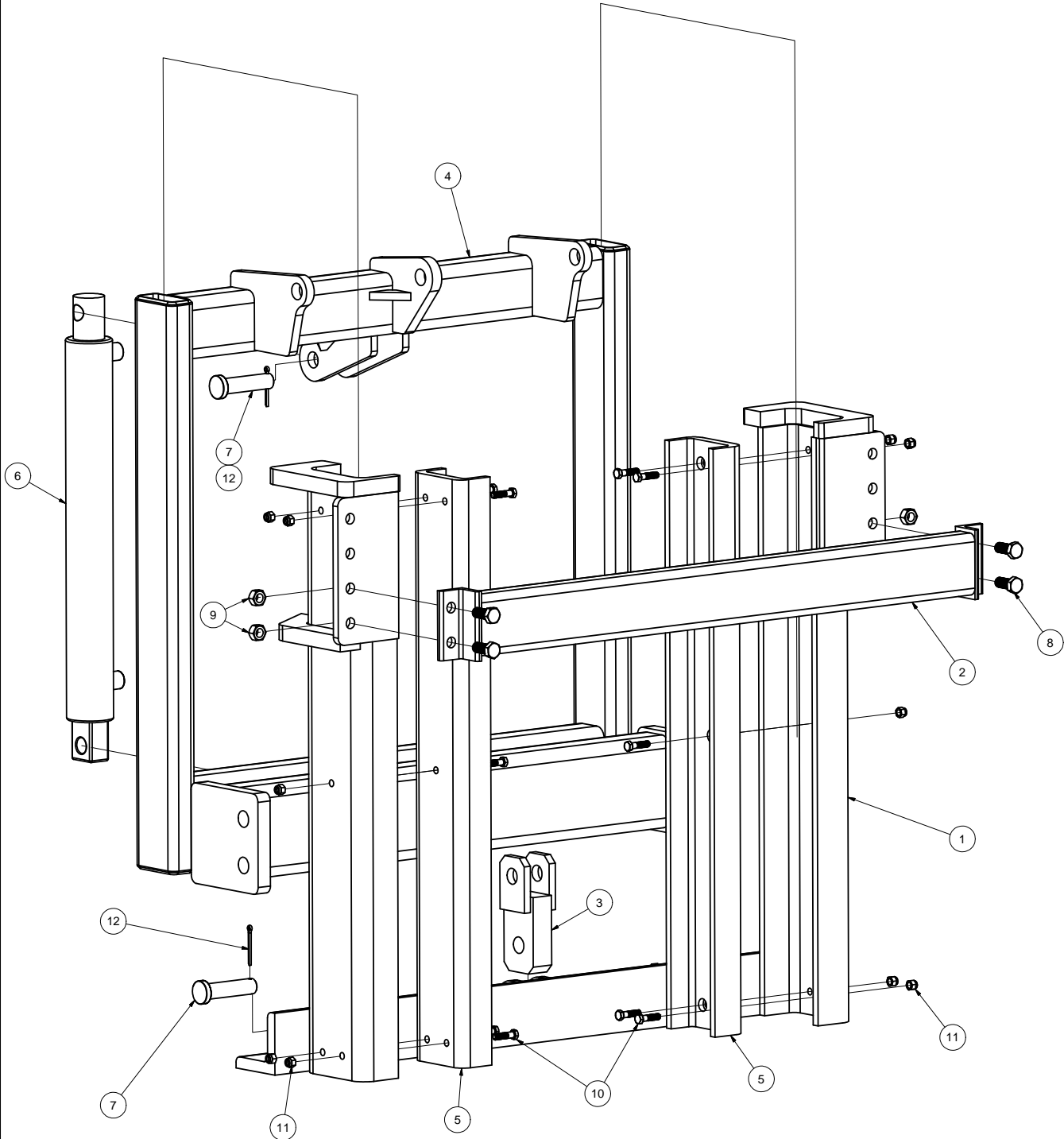
**UNIVERSAL SLIDE HITCH ASSEMBLY 30 1/2" PIN CENTERS
PART #20301058
S7005**

ITEM	DRAWING NO.	ALT. ITEM NO.	DESCRIPTION	QTY
1	20303086		OUTER WELDMENT SLIDE HITCH	1
2	20303087		INNER PLOW CONNECTING WELDMENT	1
3	20303088		SLIDE HITCH RETAINING/STOP TUBE WELD'T	1
4	20303089		SLIDE HITCH CYLINDER RISER WELDMENT	1
5	20330001		SLIDE HITCH NYLON GUIDE CHANNEL	2
6	280160		CYLINDER 3 X 2 X 20 DA SIDE PORTED	1
7	3SK3410		PIN 1" X 4"	2
8	HW40A-1012	81072	BOLT HEX 5/8 X 1 1/2 UNC ZINC	4
9	HW30E-10		NUT HEX 5/8 UNC TOPLOCK ZINC	4
10	HW40A-0612	81091	BOLT HEX 3/8 X 1 1/2 UNC ZINC	10
11	HW30E-06	81086C	NUT HEX ELASTIC 3/8 UNC ZINC	10
12	3SK3450	80518	COTTER PIN 3/16 X 2 ZINC	2

NOTE: ITEM #4 IS ONLY USED IN SITUATIONS
WHERE PIN HEIGHT IS GREATER THAN 17"

EQUIPMENT MAY NOT BE EXACTLY AS SHOWN. SOME COMPONENTS MAY BE OPTIONAL
TO MAINTAIN OUR ON-GOING PRODUCT AND DEVELOPMENT IMPROVEMENT PROGRAM, VIKING-GIVES RESERVES THE RIGHT TO CHANGE EQUIPMENT & SPECIFICATION WITHOUT NOTICE.

**UNIVERSAL SLIDE HITCH ASSEMBLY MoDOT
PART #20301061
S7005-1**



**NOTE: ITEM #3 IS ONLY USED IN SITUATIONS
WHERE PIN HEIGHT IS GREATER THAN 17"**

EQUIPMENT MAY NOT BE EXACTLY AS SHOWN. SOME COMPONENTS MAY BE OPTIONAL
TO MAINTAIN OUR ON-GOING PRODUCT AND DEVELOPMENT IMPROVEMENT PROGRAM, VIKING-GIVES RESERVES THE RIGHT TO CHANGE EQUIPMENT & SPECIFICATION WITHOUT NOTICE.



22956 HWY 61, MORLEY, MO 63767, PH: 573.262.3545, FX: 573.232.3369

**UNIVERSAL SLIDE HITCH ASSEMBLY MoDOT
PART #20301061
S7005-1**

ITEM	DRAWING NO.	ALT. ITEM NO.	DESCRIPTION	QTY
1	20303086		OUTER WELDMENT SLIDE HITCH	1
2	20303088		SLIDE HITCH RETAINING/STOP TUBE WELD'T	1
3	20303089		SLIDE HITCH CYLINDER RISER WELDMENT	1
4	20303094		INNER PLOW CONNECTING WELD'T MoDOT	1
5	20330001		SLIDE HITCH NYLON GUIDE CHANNEL	2
6	280160		CYLINDER 3 X 2 X 20 DA SIDE PORTED	1
7	3SK3410		PIN 1" X 4"	2
8	HW40A-1012	81072	BOLT HEX 5/8 X 1 1/2 UNC ZINC	4
9	HW30E-10		NUT HEX 5/8 UNC TOPLOCK ZINC	4
10	HW40A-0612	81091	BOLT HEX 3/8 X 1 1/2 UNC ZINC	10
11	HW30E-06	81086C	NUT HEX ELASTIC 3/8 UNC ZINC	10
12	3SK3450	80518	COTTER PIN 3/16 X 2 ZINC	2

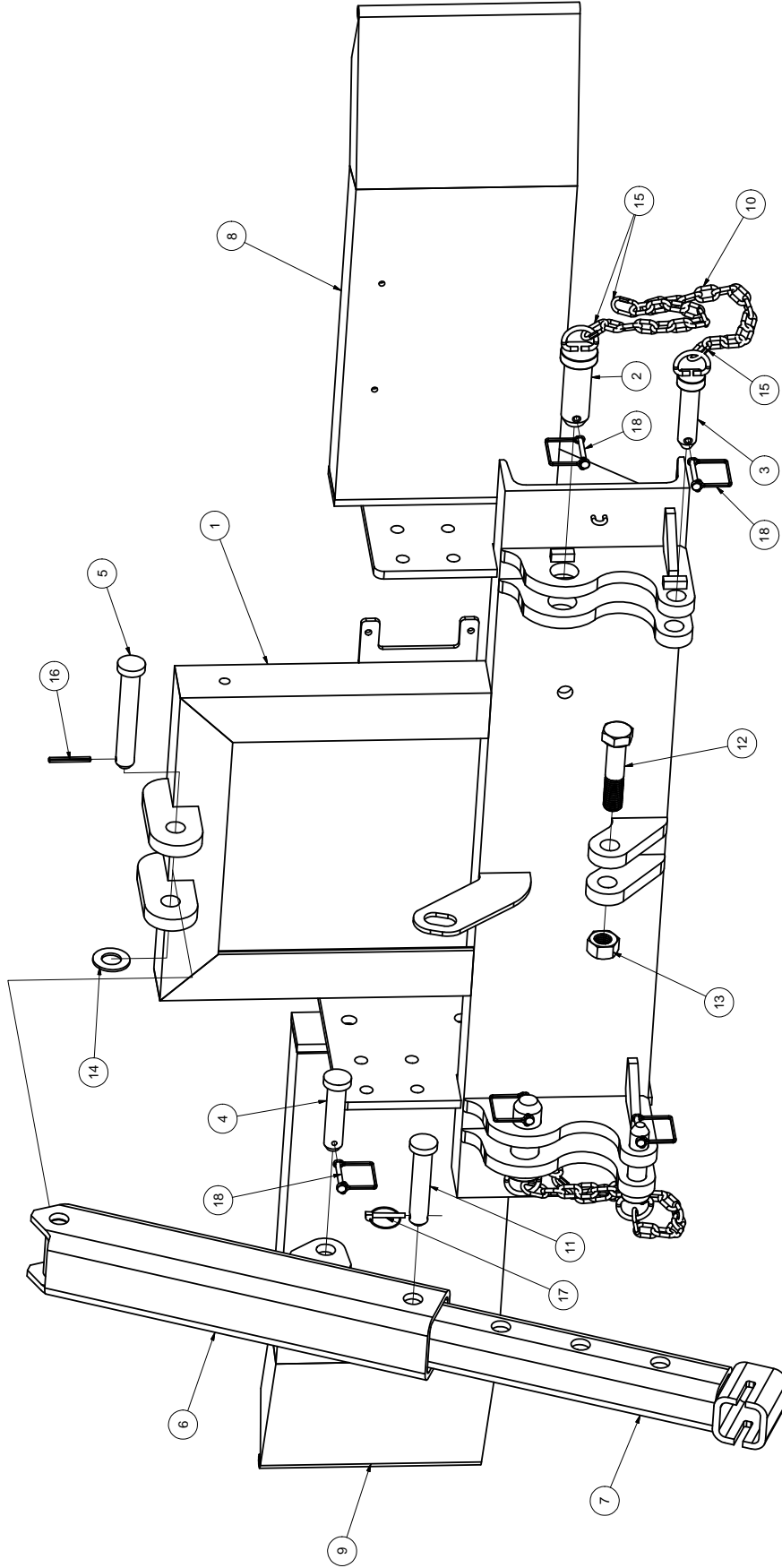
**NOTE: ITEM #3 IS ONLY USED IN SITUATIONS
WHERE PIN HEIGHT IS GREATER THAN 17"**

EQUIPMENT MAY NOT BE EXACTLY AS SHOWN. SOME COMPONENTS MAY BE OPTIONAL
TO MAINTAIN OUR ON-GOING PRODUCT AND DEVELOPMENT IMPROVEMENT PROGRAM, VIKING-GIVES RESERVES THE RIGHT TO CHANGE EQUIPMENT & SPECIFICATION WITHOUT NOTICE.



22956 HWY 61, MORLEY, MO 63767, PH: 573.262.3545, FX: 573.232.3369

DROP BAR STYLE HITCH ASSEMBLY 36 5/16" PIN CENTERS PART #20301055 S7020



EQUIPMENT MAY NOT BE EXACTLY AS SHOWN. SOME COMPONENTS MAY BE OPTIONAL.
EQUIPMENT IMPROVEMENT PROGRAM. VIKING CIVES RESERVES THE RIGHT TO CHANGE EQUIPMENT & SPECIFICATION WITHOUT NOTICE.



22956 HWY 61, MORLEY, MO 63767, PH: 573.262.3545, FX: 573.232.3369

DROP BAR STYLE HITCH ASSEMBLY 36 5/16" PIN CENTERS
PART #20301055
S7020

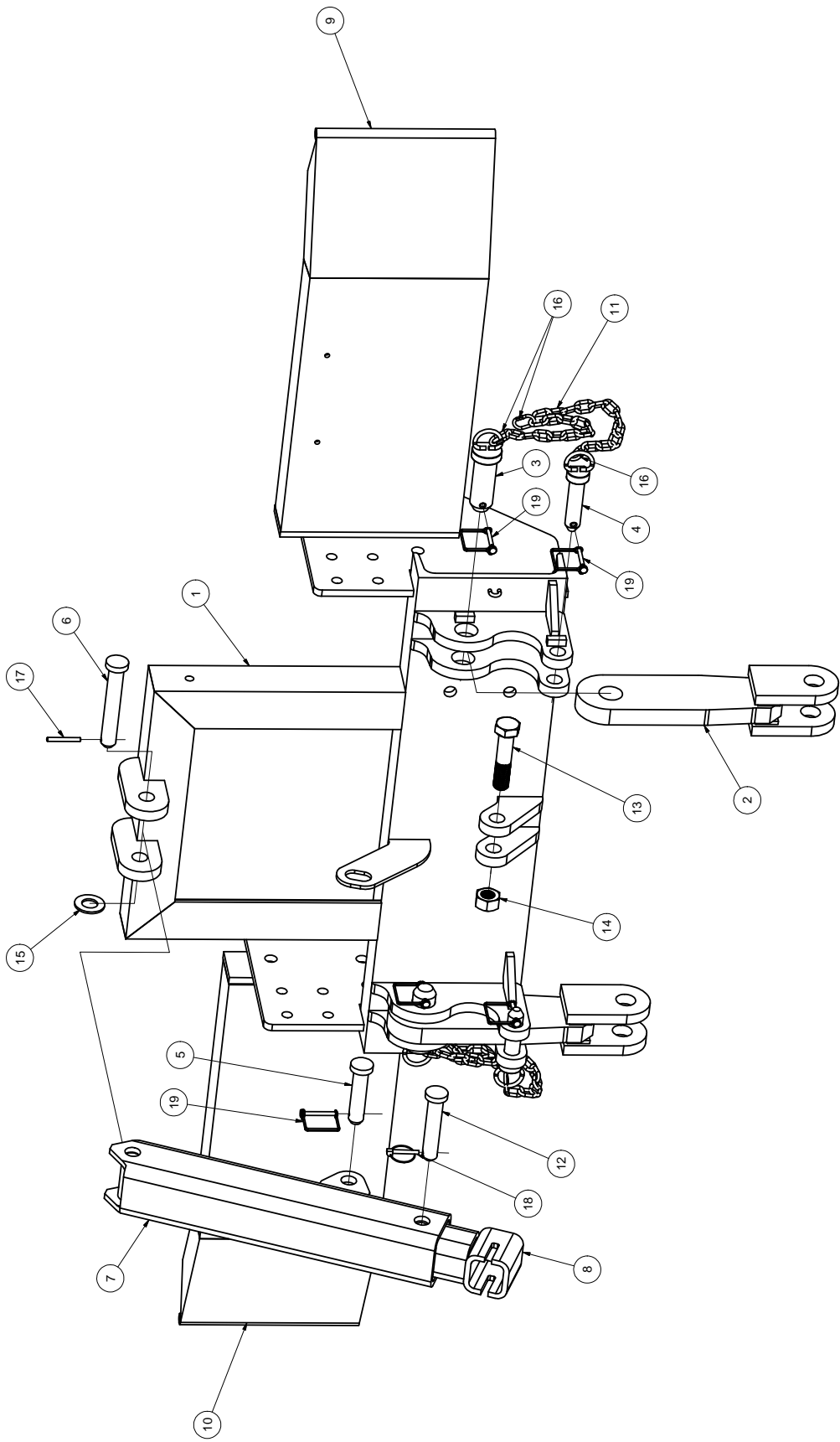
ITEM	DRAWING NO.	ALT. ITEM NO.	DESCRIPTION	QTY
1	20303081		MoDOT FRONT HITCH WELD'T 2010	1
2	20903035		PIN 1.50 DIA X 3.188 UH MoDOT HITCH	2
3	20903036		PIN 1.00 DIA X 3.188 UH MoDOT HITCH	2
4	21100020		PIN 1.000 DIA X 4.250 UH	1
5	21100096		PIN 1.000 DIA X 5.875 UH	1
6	21100108		OUTER TUBE TELE. LIFT ARM WELDMENT	1
7	21100113		INNER TUBE TELE. LIFT ARM WELDMENT	1
8	41303958		DRVS SD CHANNEL BUMPER WELD'T 12"	1
9	41303959		PASS SD CHANNEL BUMPER WELD'T 12"	1
10	41319011		MoDOT FBH PIN ATTACHING CHAIN	4
11	20P054		LIFT ARM PIN 1" X 5"	1
12	HW40A-1636	81022	BOLT HEX 1 X 4 1/2 UNC ZINC	1
13	HW30E-16		NUT HEX 1 UNC TOPLOCK ZINC	1
14	HW14A-16	81013A	FLATWASHER SAE 1" ZINC	1
15	HW24C-02		3/16 QUICK LINK	6
16	HW13B-0834		ROLL PIN 1/4 X 2 1/4	1
17	HW13T-0828		LYNCH PIN 1/4 X 1 3/4 ZINC	1
18	HW13Q-0832	81112A	LOCK PIN 1/4 X 2 ZINC	5

TO MAINTAIN OUR ONGOING PRODUCT AND DEVELOPMENT IMPROVEMENT PROGRAM, VIKING CIVES RESERVES THE RIGHT TO CHANGE EQUIPMENT & SPECIFICATION WITHOUT NOTICE.



22956 HWY 61, MORLEY, MO 63767, PH: 573.262.3545, FX: 573.232.3369

DROP BAR STYLE HITCH ASSEMBLY 30" PIN CENTERS PART #20301057 S7023



EQUIPMENT MAY NOT BE EXACTLY AS SHOWN. SOME COMPONENTS MAY BE OPTIONAL.
EQUIPMENT IMPROVEMENT PROGRAM: VIKING-CIVES RESERVES THE RIGHT TO CHANGE EQUIPMENT & SPECIFICATION WITHOUT NOTICE.



22956 HWY 61, MORLEY, MO 63767, PH: 573.262.3545, FX: 573.232.3369

DROP BAR STYLE HITCH ASSEMBLY 30" PIN CENTERS
 PART #20301057
 S7023

ITEM	DRAWING NO.	ALT. ITEM NO.	DESCRIPTION	QTY
1	20303084		TENN FRONT HITCH WELD'T 2010	1
2	20303085		DROP BAR WELDMENT (TENN)	2
3	20903035		PIN 1.50 DIA X 3.188 UH MoDOT HITCH	2
4	20903036		PIN 1.00 DIA X 3.188 UH MoDOT HITCH	2
5	21100020		PIN 1.000 DIA X 4.250 UH	1
6	21100096		PIN 1.000 DIA X 5.875 UH	1
7	21100108		OUTER TUBE TELE. LIFT ARM WELDMENT	1
8	21100113		INNER TUBE TELE. LIFT ARM WELDMENT	1
9	41303958		DRVS SD CHANNEL BUMPER WELD'T 12"	1
10	41303959		PASS SD CHANNEL BUMPER WELD'T 12"	1
11	41319011		MoDOT FBH PIN ATTACHING CHAIN	4
12	20P054		LIFT ARM PIN 1 X 5	1
13	HW40A-1636	81022	BOLT HEX 1 X 4 1/2 UNC ZINC	1
14	HW30E-16		NUT HEX 1 UNC TOPLOCK ZINC	1
15	HW14A-16	81013A	FLATWASHER SAE 1" ZINC	1
16	HW24C-02		3/16 QUICK LINK	6
17	HW13B-0834		ROLL PIN 1/4 X 2 1/4	1
18	HW13T-0808		LYNCH PIN 1/4 X 1 3/4 ZINC	1
19	HW13Q-0832	81112A	LOCK PIN 1/4 X 2 ZINC	5

TO MAINTAIN OUR ONGOING PRODUCT AND DEVELOPMENT IMPROVEMENT PROGRAM, VIKING CIVES RESERVES THE RIGHT TO CHANGE EQUIPMENT & SPECIFICATION WITHOUT NOTICE.

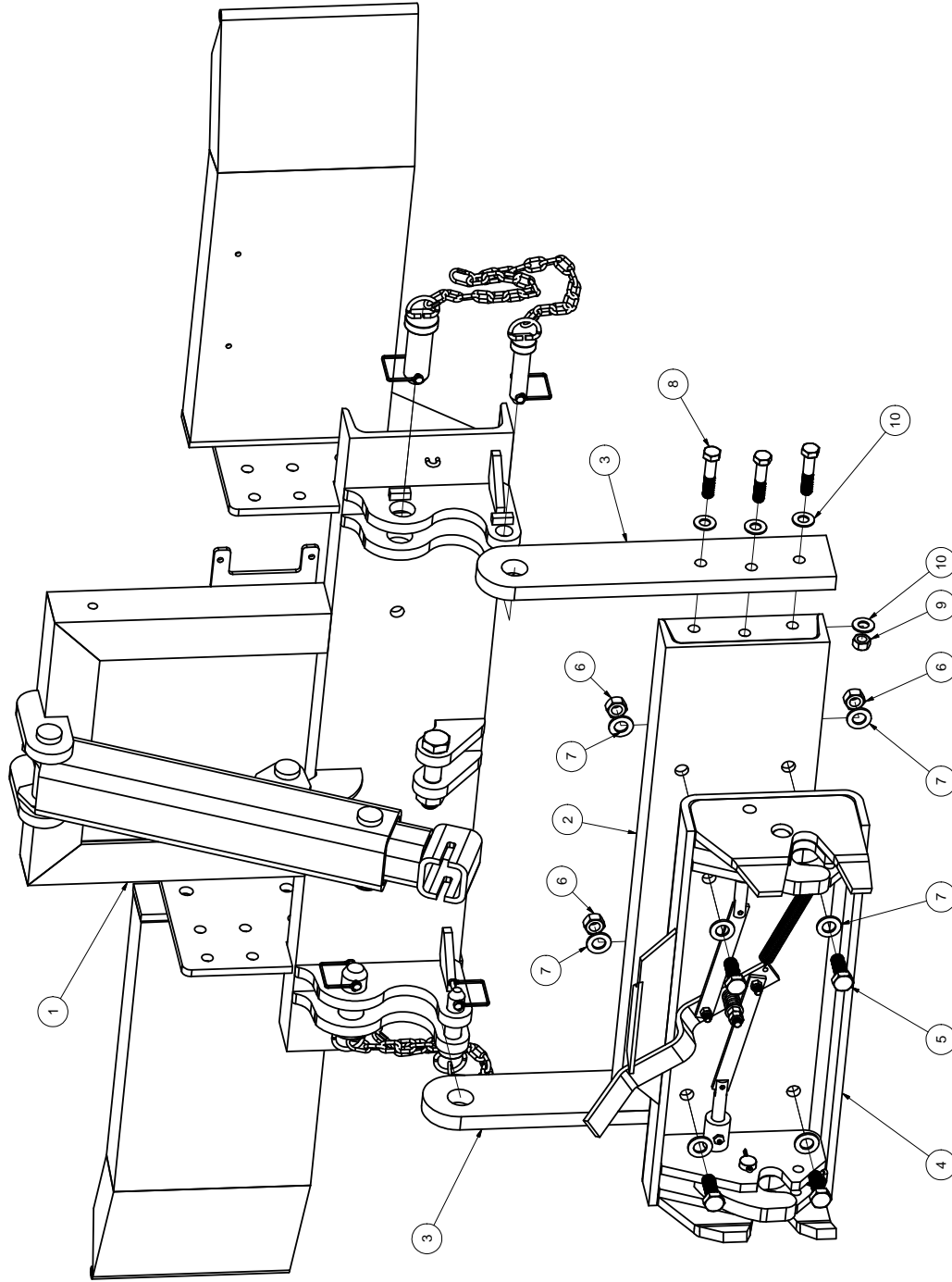


22956 HWY 61, MORLEY, MO 63767, PH: 573.262.3545, FX: 573.232.3369

BUMPER STYLE HITCH WITH DROP BAR FLINK CROSS CHANNEL ASSEMBLY

PART #20301071

S7024



TO MAINTAIN OUR ONGOING PRODUCT AND DEVELOPMENT IMPROVEMENT PROGRAM, VIKING GIVES RESERVES THE RIGHT TO CHANGE EQUIPMENT & SPECIFICATION WITHOUT NOTICE.



22956 HWY 61, MORLEY, MO 63767, PH: 573.262.3545, FX: 573.232.3369

BUMPER STYLE HITCH WITH DROP BAR FLINK CROSS CHANNEL ASSEMBLY
PART #20301071
S7024

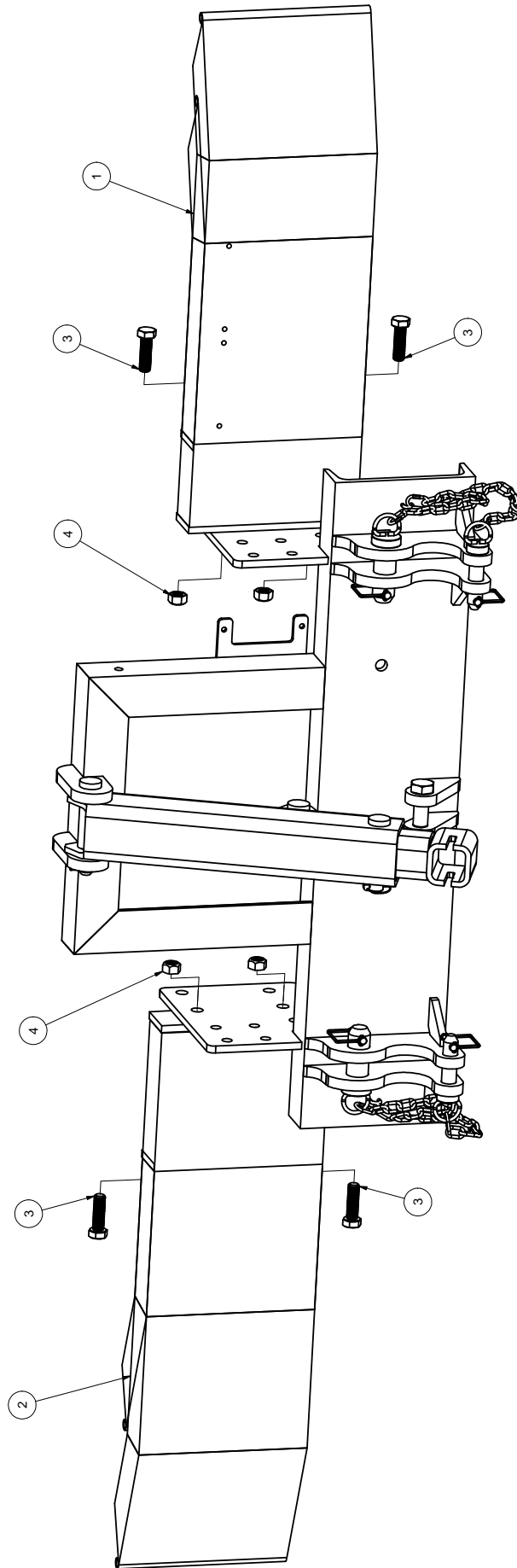
ITEM	DRAWING NO.	ALT. ITEM NO.	DESCRIPTION	QTY
1	20301055		MoDOT BUMPER HITCH ASS'Y NEW STYLE 2010	1
2	20303105		BOLT ON CHANNEL WELD'T FLINK RECEIVER	1
3	21100061		PLOW HANGER	2
4	2FLKSWIV-T		FLINK QUICK LINK RECEIVER	1
5	HW40A-1216	81064E	BOLT HEX 3/4 X 2 UNC ZINC	4
6	HW30E-12		NUT HEX 3/4 UNC TOPLOCK ZINC	4
7	HW14A-12	81062X	FLATWASHER SAE 3/4" ZINC	8
8	HW40A-1024		BOLT HEX 5/8 X 3 UNC ZINC	6
9	HW30E-10		NUT HEX 5/8 UNC TOPLOCK ZINC	6
10	HW14A-10	81070A	FLATWASHER SAE 5/8 ZINC	12

TO MAINTAIN OUR ONGOING PRODUCT AND DEVELOPMENT IMPROVEMENT PROGRAM, VIKING CIVES RESERVES THE RIGHT TO CHANGE EQUIPMENT & SPECIFICATION WITHOUT NOTICE.



22956 HWY 61, MORLEY, MO 63767, PH: 573.262.3545, FX: 573.232.3369

BOLT ON 12" BUMPER WELDMENT LAYOUT



TO MAINTAIN OUR ONGOING PRODUCT AND DEVELOPMENT IMPROVEMENT PROGRAM, VIKING-CIVES RESERVES THE RIGHT TO CHANGE EQUIPMENT & SPECIFICATION WITHOUT NOTICE.



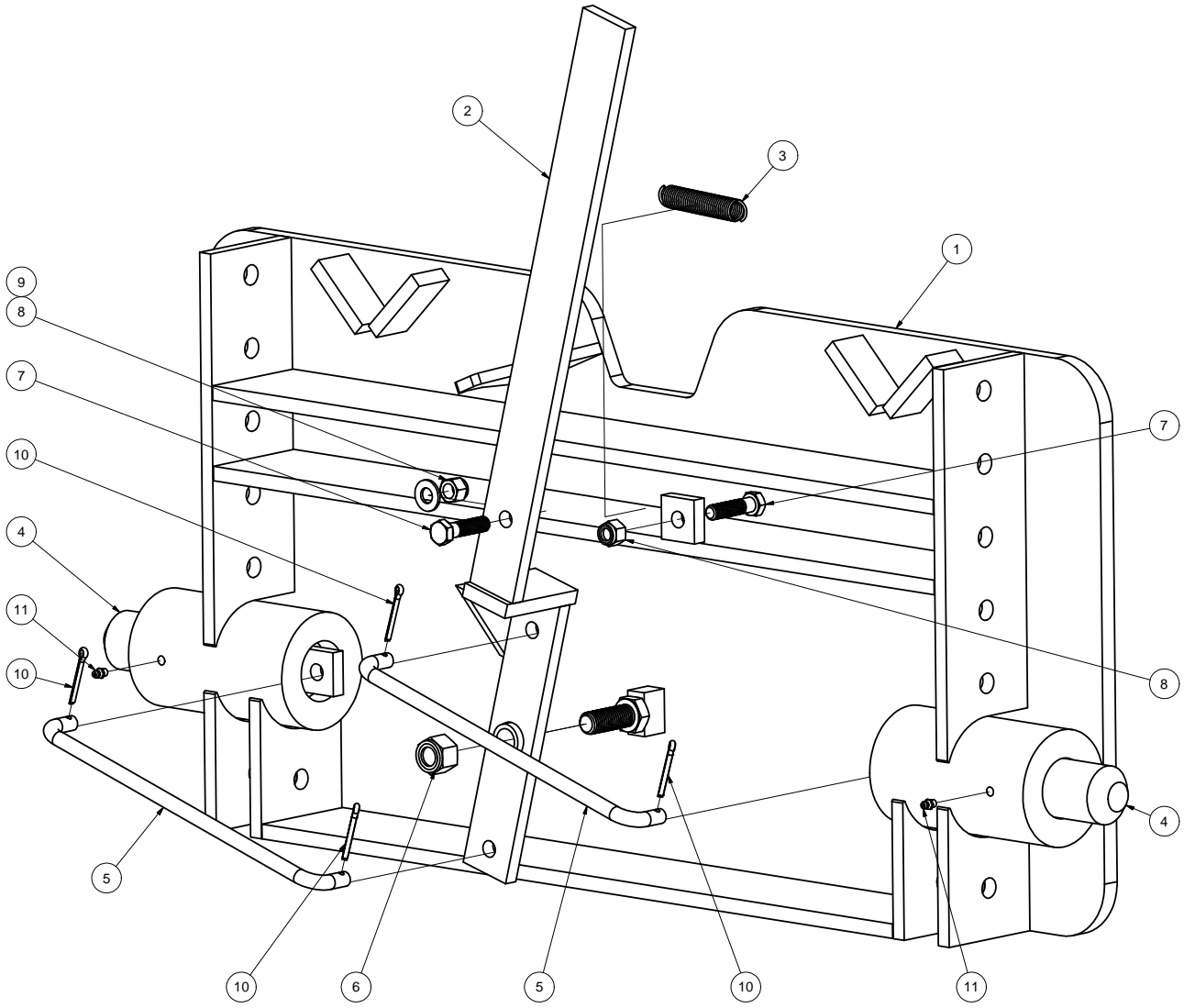
22956 HWY 61, MORLEY, MO 63767, PH: 573.262.3545, FX: 573.232.3369

BOLT ON 12" BUMPER WELDMENT LAYOUT

ITEM	DRAWING NO.	ALT. ITEM NO.	DESCRIPTION	QTY
1	41303958		DRVS SD CHANNEL BUMPER WELD'T 12"	1
2	41303959		PASS SD CHANNEL BUMPER WELD'T 12"	1
3	HW40A-1220		BOLT HEX 3/4" X 2 1/2" UNC ZINC	4
4	HW30E-12		NUT HEX 3/4 UNC TOPLOCK ZINC	4

TO MAINTAIN OUR ONGOING PRODUCT AND DEVELOPMENT IMPROVEMENT PROGRAM, VIKING CIVES RESERVES THE RIGHT TO CHANGE EQUIPMENT & SPECIFICATION WITHOUT NOTICE.

FACE PLATE TRUCK HALF LOCKING PIN STYLE ASSEMBLY
PART #20301024
S7036



EQUIPMENT MAY NOT BE EXACTLY AS SHOWN. SOME COMPONENTS MAY BE OPTIONAL
TO MAINTAIN OUR ON-GOING PRODUCT AND DEVELOPMENT IMPROVEMENT PROGRAM, VIKING-GIVES RESERVES THE RIGHT TO CHANGE EQUIPMENT & SPECIFICATION WITHOUT NOTICE.



22956 HWY 61, MORLEY, MO 63767, PH: 573.262.3545, FX: 573.232.3369

FACE PLATE TRUCK HALF LOCKING PIN STYLE ASSEMBLY
 PART #20301024
 S7036

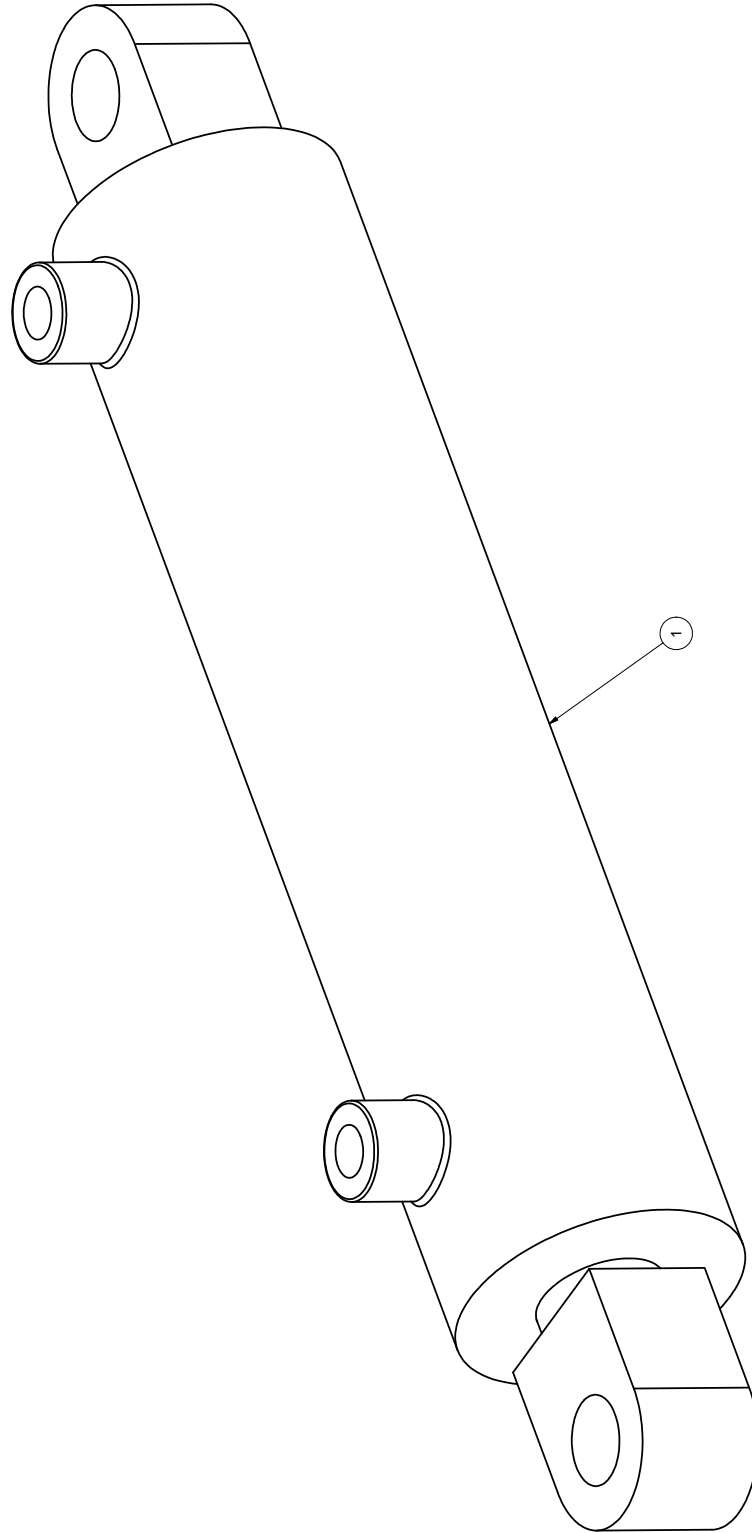
ITEM	DRAWING NO.	ALT. ITEM NO.	DESCRIPTION	QTY
1	10303114		HITCH WELDMENT FACE PL LOCKING PIN STYLE	1
2	10303115		HANDLE WELDMENT FACE PLATE	1
3	180412A		SPRING TORSION 3/4 X 4 1/2	1
4	10903076		PIN WELDMENT FACE PLATE HITCH	2
5	10909009		LINKAGE BAR 13 CTR TO CTR	2
6	HW30E-12		NUT HEX TOPLOCK 3/4" UNC ZINC	1
7	HW40A-0816	81083	BOLT HEX 1/2 X 2 UNC ZINC	2
8	HW36D-08		NUT HEX TOPLOCK 1/2" UNC ZINC	2
9	HW14A-08		FLATWASHER SAE 1/2 ZINC	2
10	HW13A-0624		COTTER PIN 3/16 x 1 1/2 ZINC	4
11	280577	80577D/80579	GREASE FITTING 1/8 28 STR	2

EQUIPMENT MAY NOT BE EXACTLY AS SHOWN. SOME COMPONENTS MAY BE OPTIONAL
 TO MAINTAIN OUR ON-GOING PRODUCT AND DEVELOPMENT IMPROVEMENT PROGRAM, VIKING-GIVES RESERVES THE RIGHT TO CHANGE EQUIPMENT & SPECIFICATION WITHOUT NOTICE.



22956 HWY 61, MORLEY, MO 63767, PH: 573.262.3545, FX: 573.232.3369

UNIVERSAL HITCH CYLINDERS



NOTE: ANY CYLINDER WITH AN * IS NOT APPLICABLE WITH ANY BUMPER STYLE HITCH

EQUIPMENT MAY NOT BE EXACTLY AS SHOWN. SOME COMPONENTS MAY BE OPTIONAL.
EQUIPMENT IMPROVEMENT PROGRAM. VIKING GIVES RESERVES THE RIGHT TO CHANGE EQUIPMENT & SPECIFICATION WITHOUT NOTICE.



22956 HWY 61, MORLEY, MO 63767, PH: 573.262.3545, FX: 573.232.3369

UNIVERSAL HITCH CYLINDERS

ITEM	DRAWING NO.	ALT. ITEM NO.	DESCRIPTION	QTY
1	3SK4029		2 1/2 X 10 SA CYLINDER	1
1	280151		3 X 10 SA CYLINDER	1
1	280150		3 X 10 DA CYLINDER	1
1	280170	*	4 X 10 SA CYLINDER	1
1	280171	*	4 X 10 DA CYLINDER	1

NOTE: ANY CYLINDER WITH AN * IS NOT APPLICABLE WITH ANY BUMPER STYLE HITCH

TO MAINTAIN OUR ONGOING PRODUCT AND DEVELOPMENT PROGRAM, VIKING CIVES RESERVES THE RIGHT TO CHANGE EQUIPMENT & SPECIFICATION WITHOUT NOTICE.