



 **Cives**  
**Steel Company**  
South-West Division

**5-YEAR ANNIVERSARY**

**2019 - 2024**

A wide-angle photograph of a construction site during sunset. The sky is filled with soft, orange and yellow light, transitioning into a darker blue at the top. In the foreground, there is a dirt road and some sparse green vegetation. In the middle ground, several pieces of heavy machinery, including a yellow bulldozer and a white pickup truck, are visible. In the background, there are low mountains and a city skyline under a hazy sky.

2019

“The Dirt”









































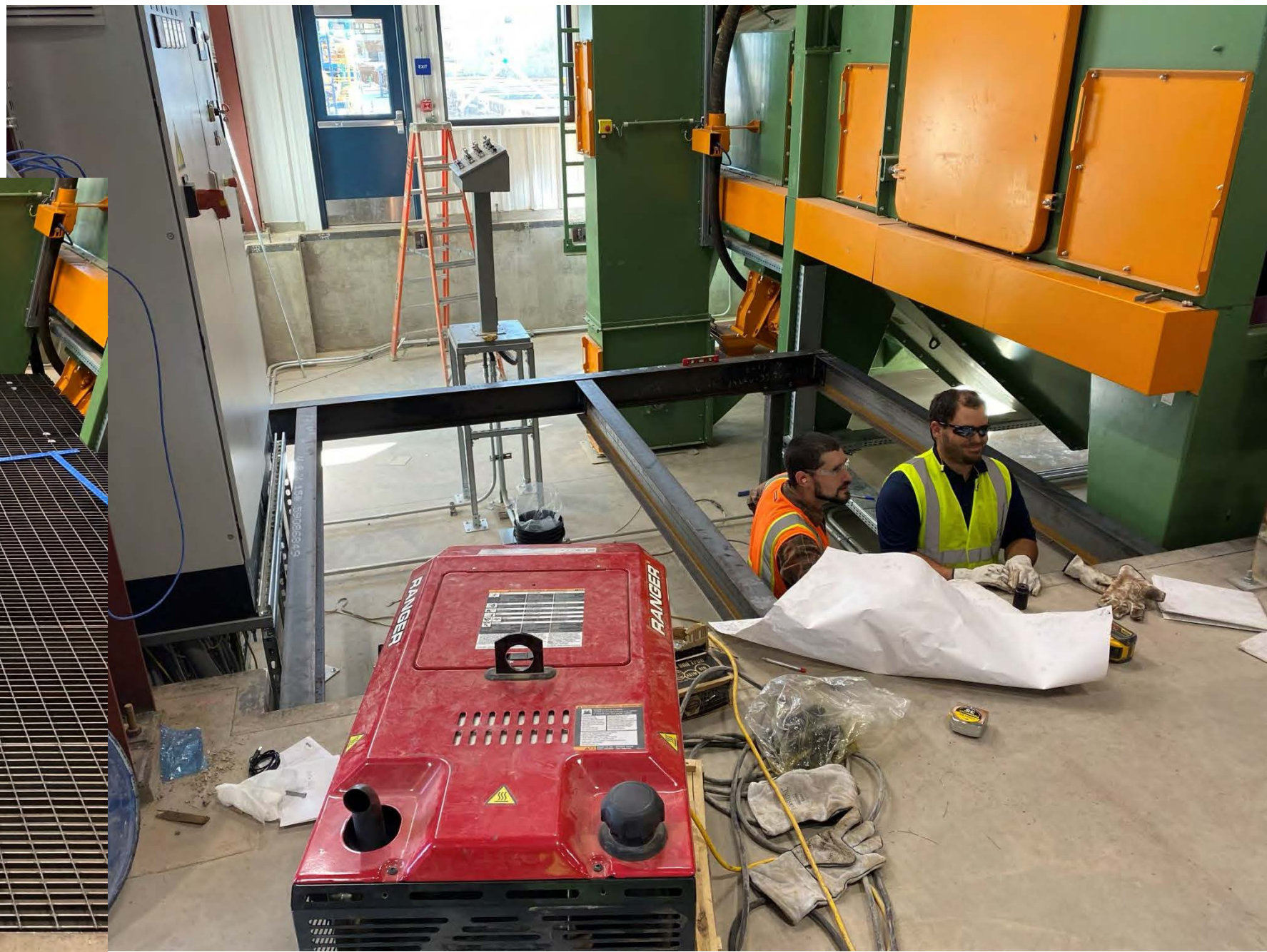
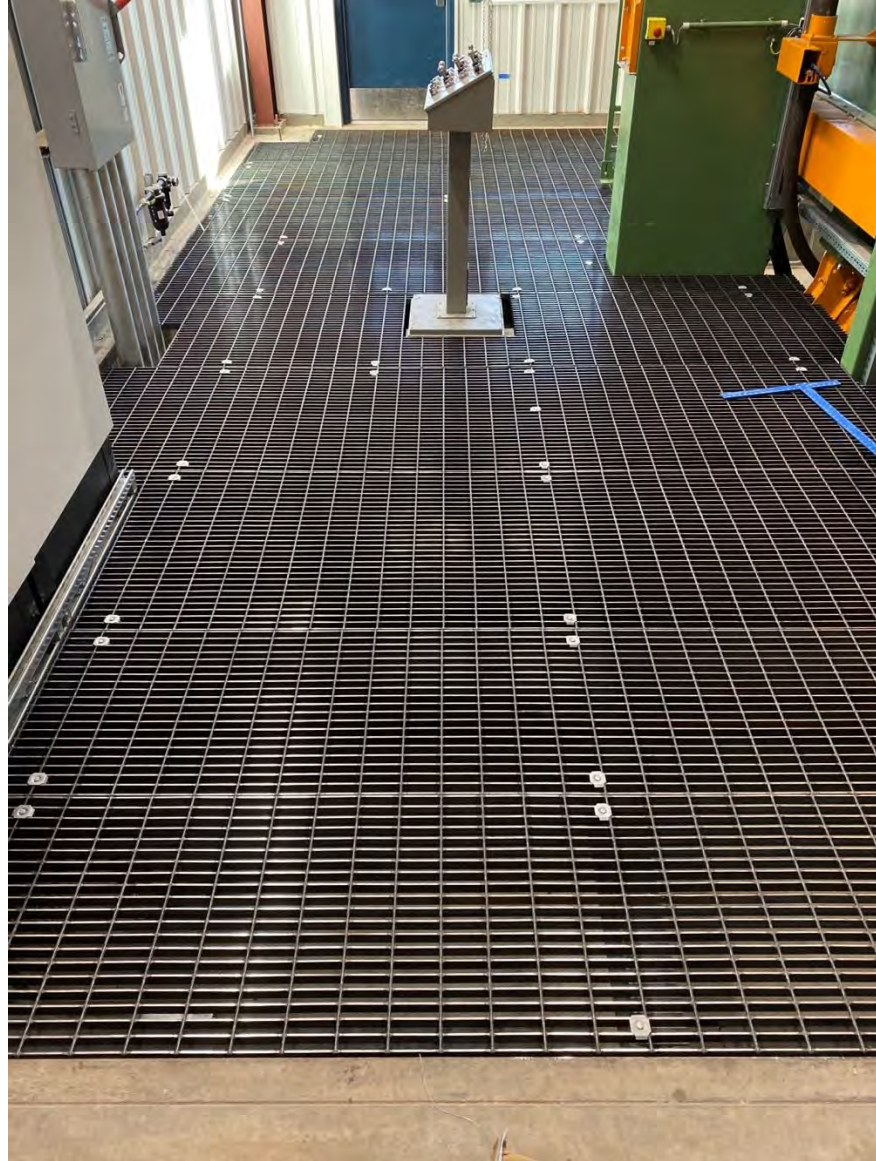
















# RIBBON CUTTING







RAGE  
DEPT

TRAC  
DEPT

Weld  
Life

Weld  
Life

Weld  
Life

Weld  
Life

Weld  
Life

Weld  
Life

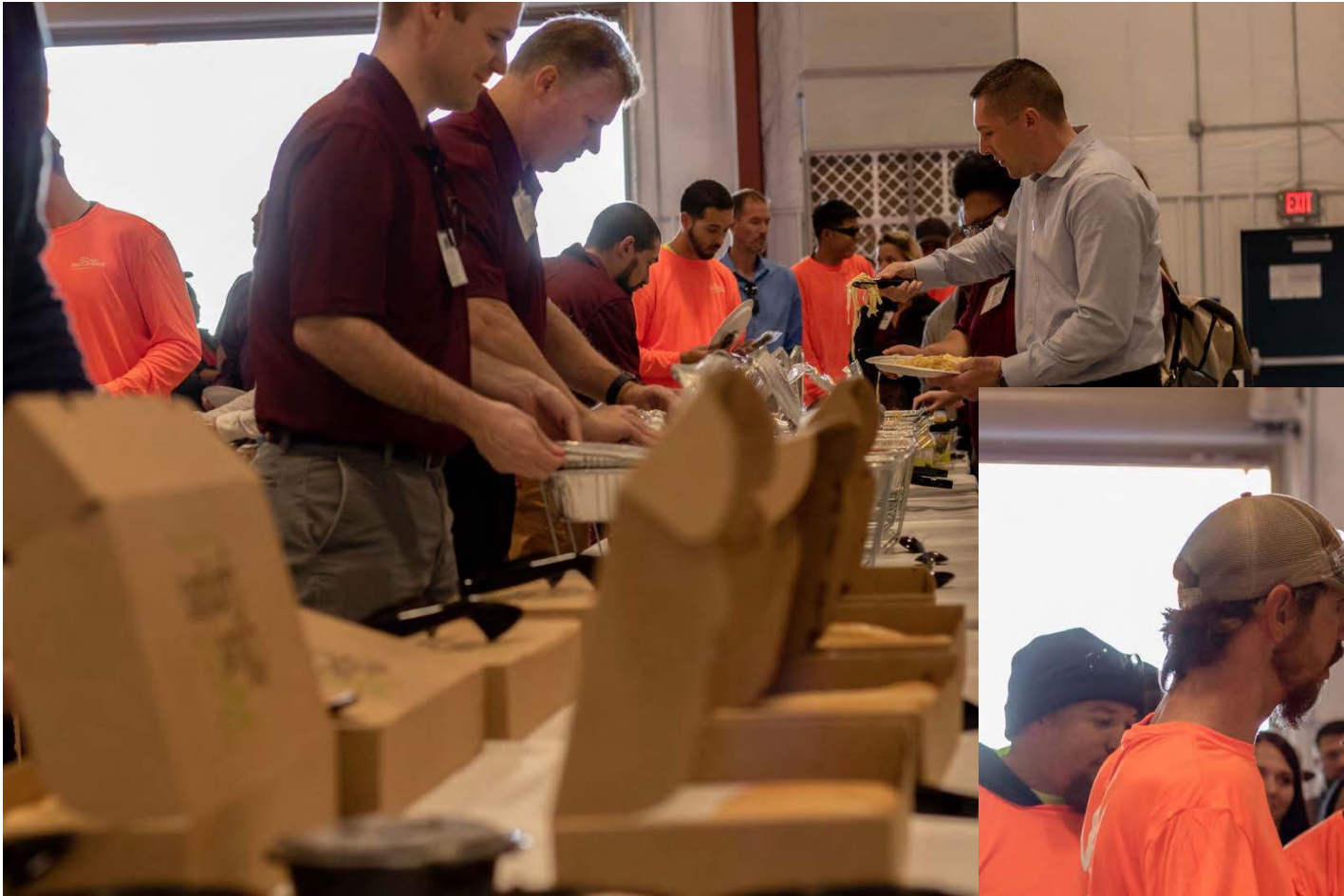
Weld  
Life

Weld  
Life















# 2020

# Let's get to work!



# VA PHOENIX



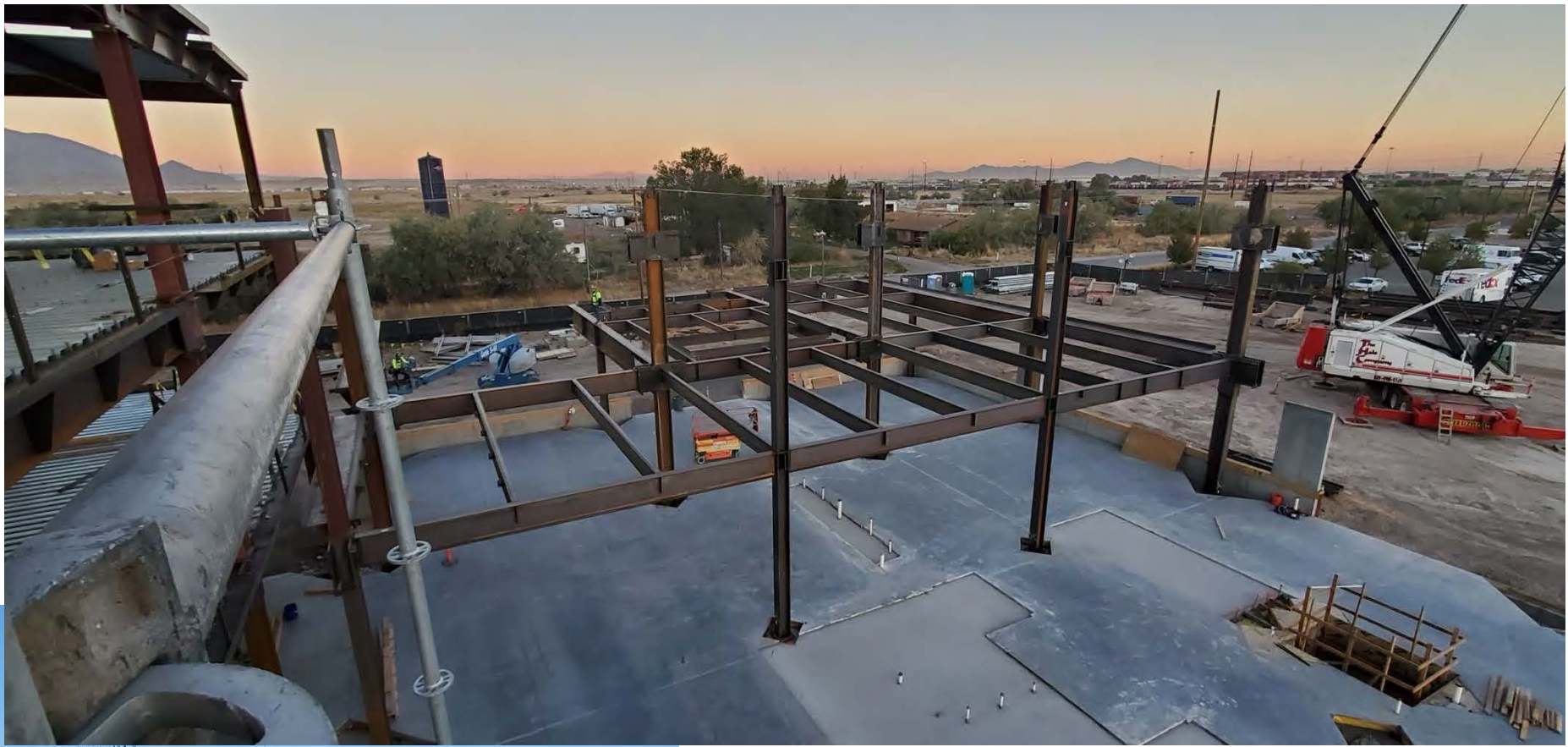


**LUCID MOTORS**









**BIOFIRE**

A large industrial facility under construction. The structure consists of a network of steel beams and cross-braces. A yellow overhead crane is suspended from the top beams. In the center, a dark-colored train car is positioned on tracks. The car has "BNSF 548 028" written on its side. The ground is a mix of dirt and gravel, with several long wooden beams laid out. The background shows a clear blue sky and some distant greenery.

2021

On the rise!



**LAC USC**















**2022**

**Making strides!**



# SOUTHEAST JUSTICE CENTER

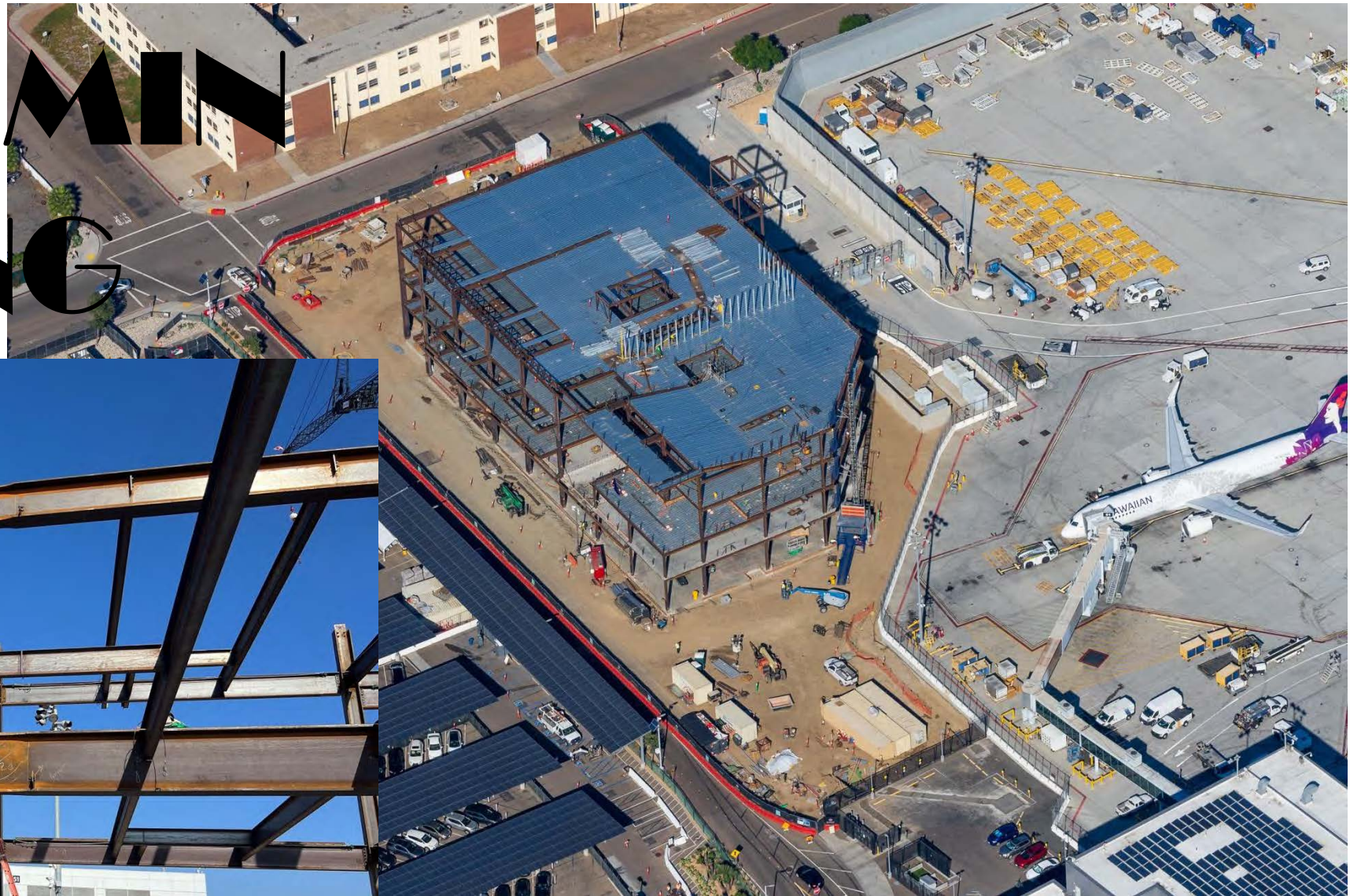
# VALLEYWISE





# **JAMES A. MUSICK**

# SDIA ADMIN BUILDING





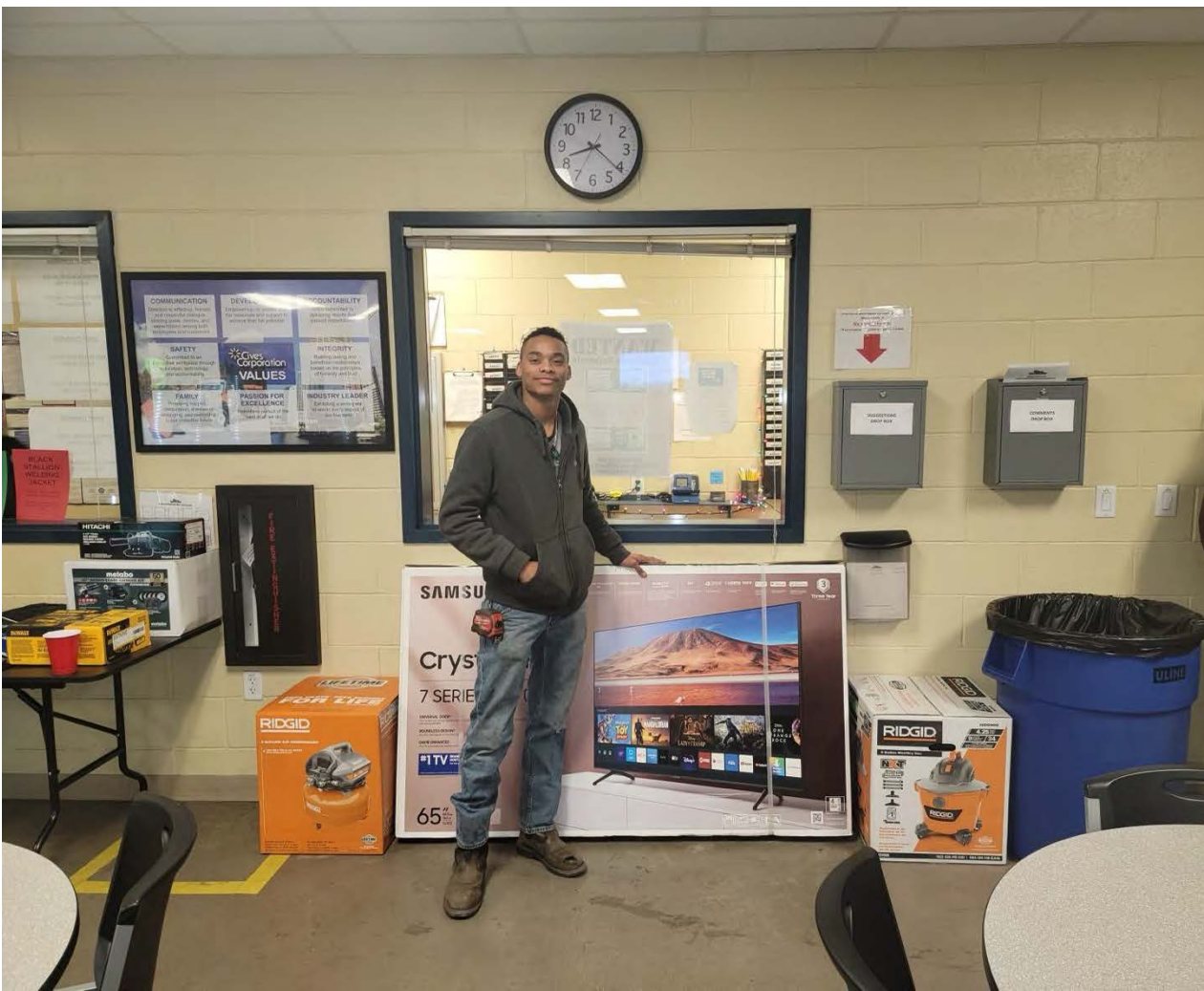
**MATTEL**

# COLD STORAGE







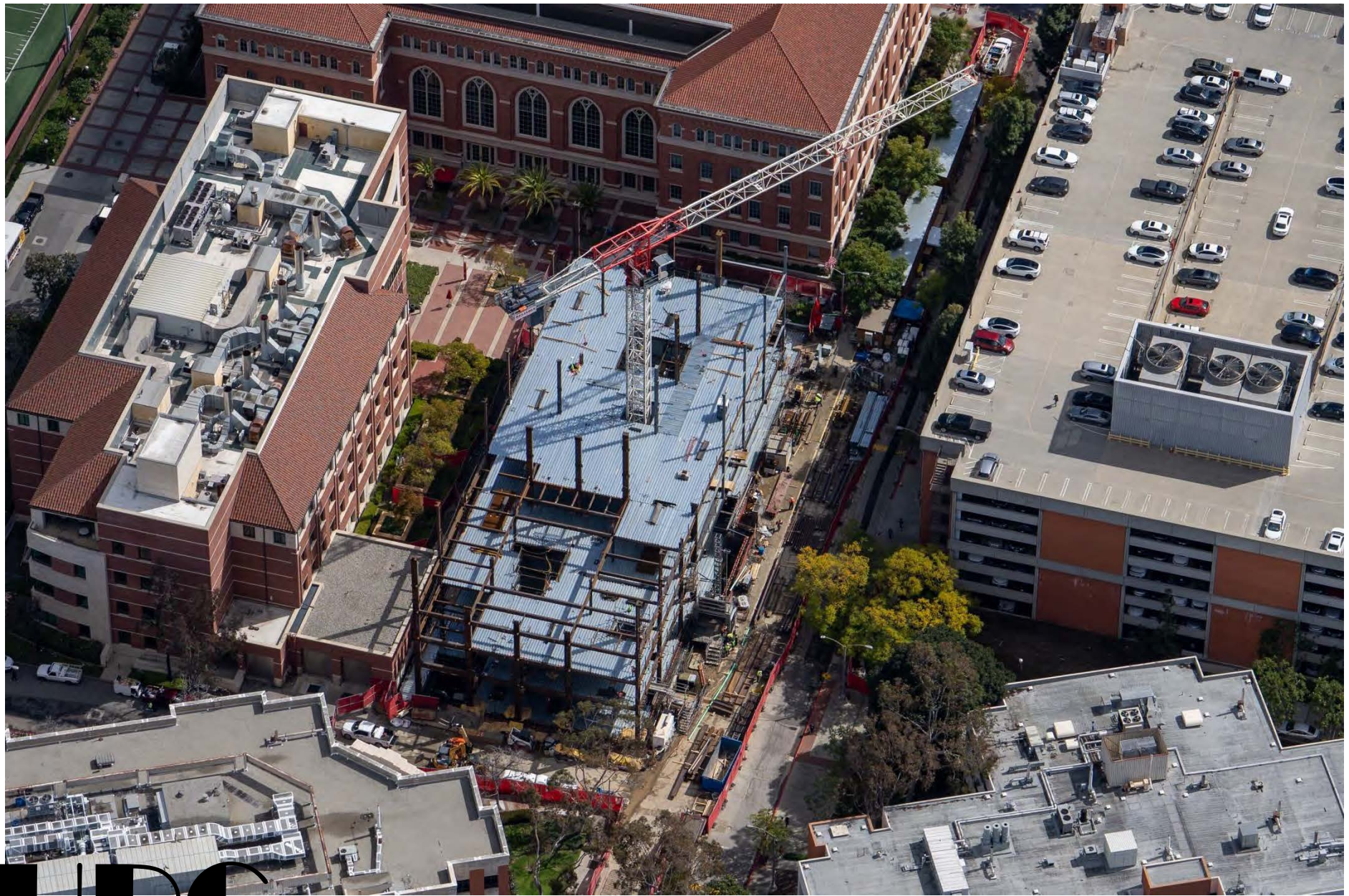




2023

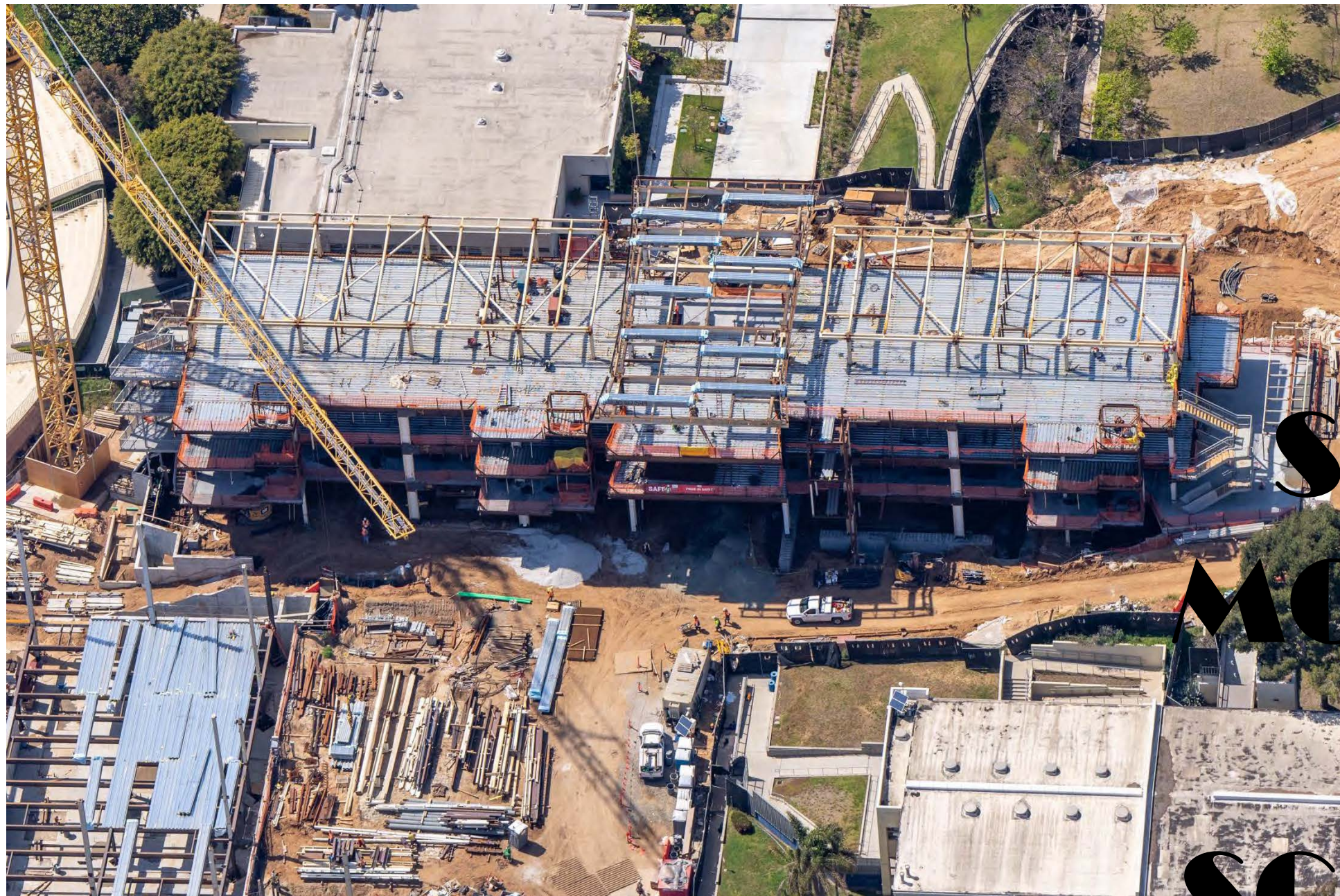
Coming together!

# USC GINSBURG





# PROJECT DYNASTY



**SANTA  
MONICA  
HIGH  
SCHOOL**



# DC ELECTIONS



**FORD**  
**BOSK**



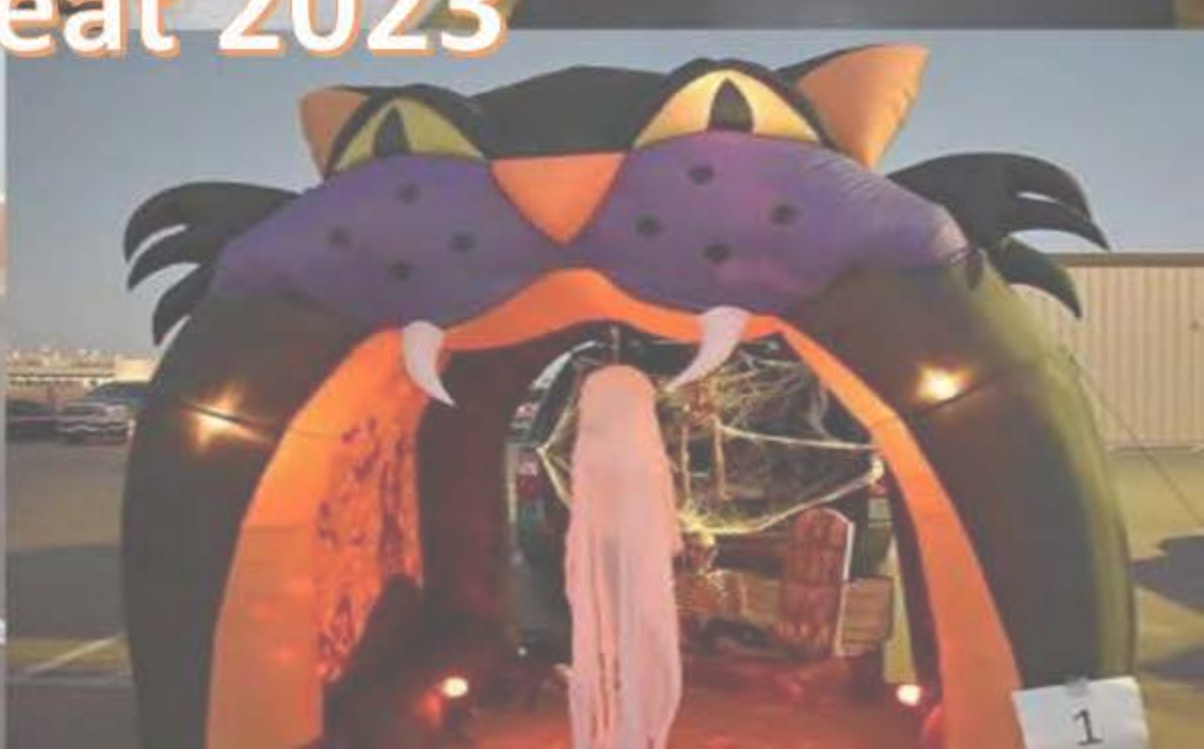


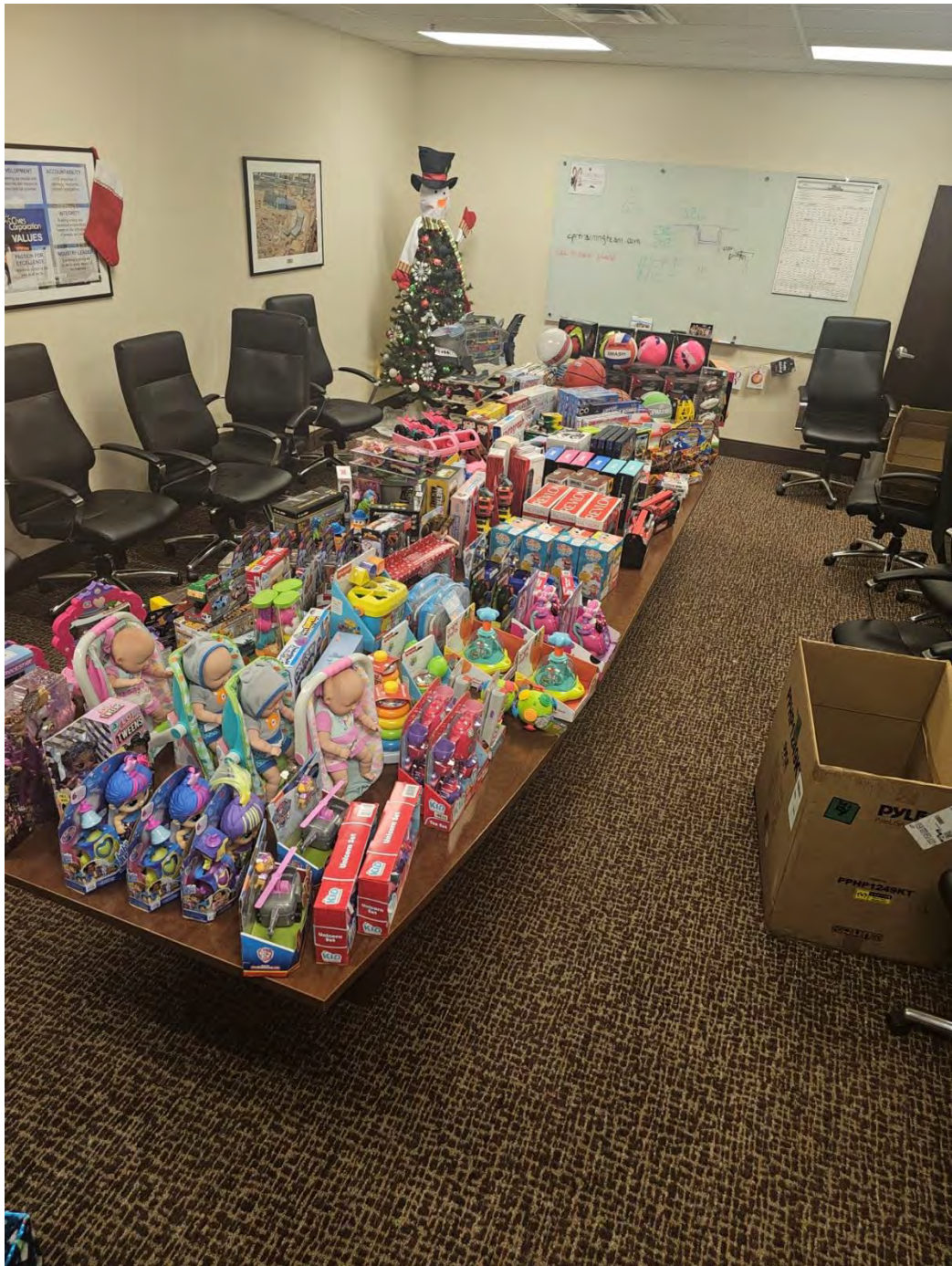
## Trunk or Treat 2023





## Trunk or Treat 2023







A large industrial manufacturing facility, likely a steel mill or metal fabrication shop. The scene is filled with heavy machinery, including a large green machine with a yellow safety railing in the foreground. In the background, several workers in safety gear are visible, and the floor is covered with long, dark metal beams and structural components. The lighting is bright, and the overall atmosphere is one of active industrial production.

**2024**

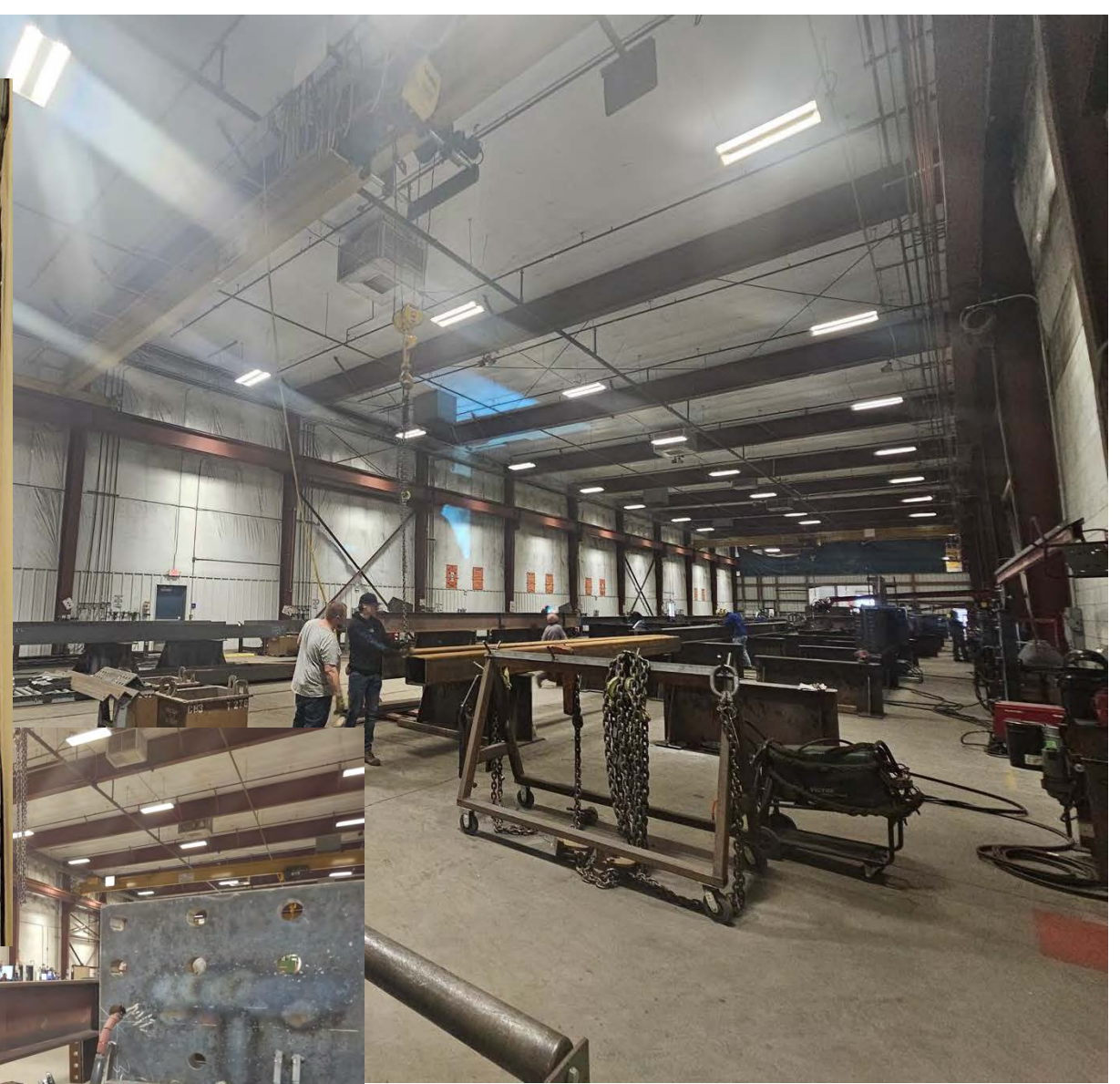
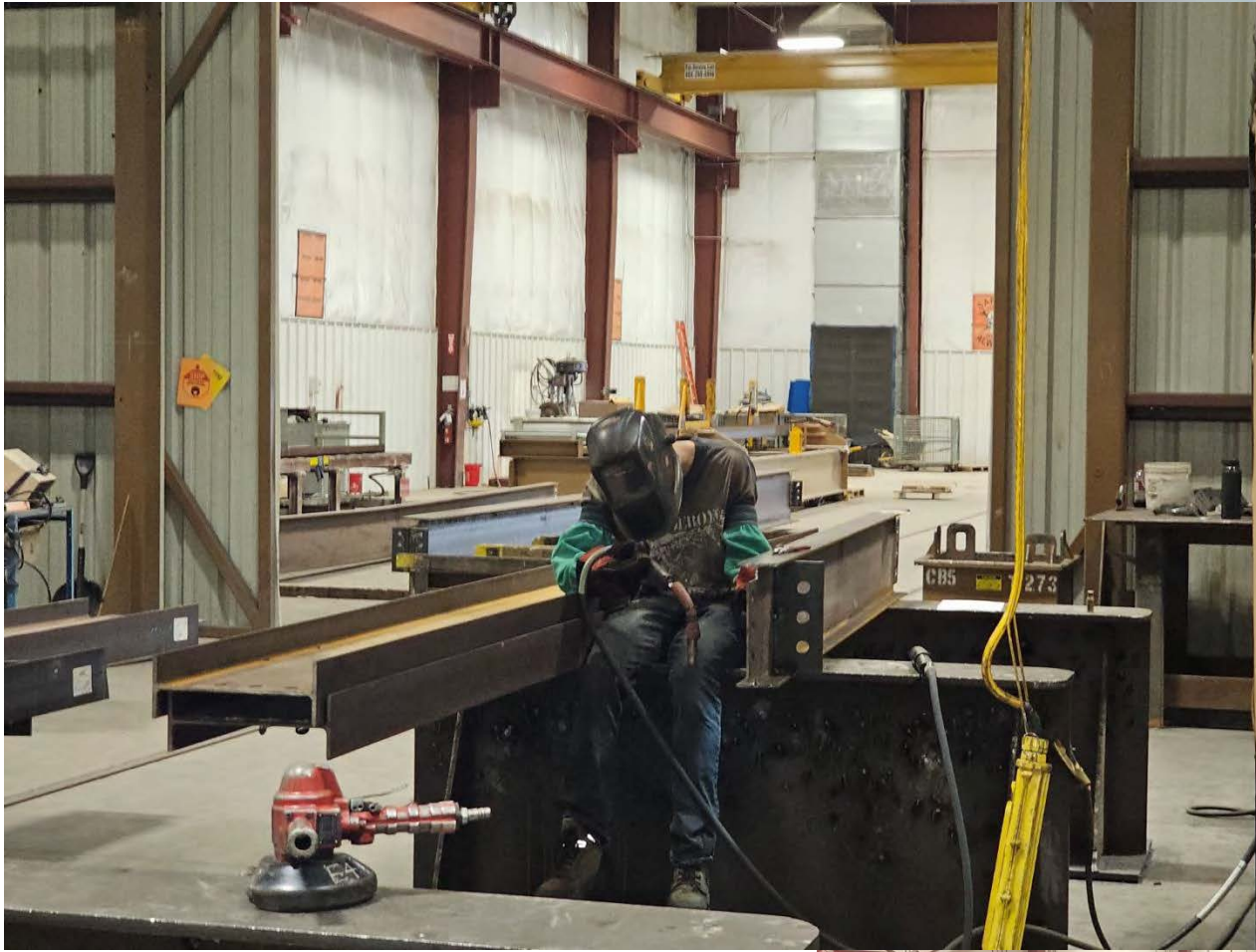
**On to bigger jobs!**

# STREAM 2 DATA CENTER





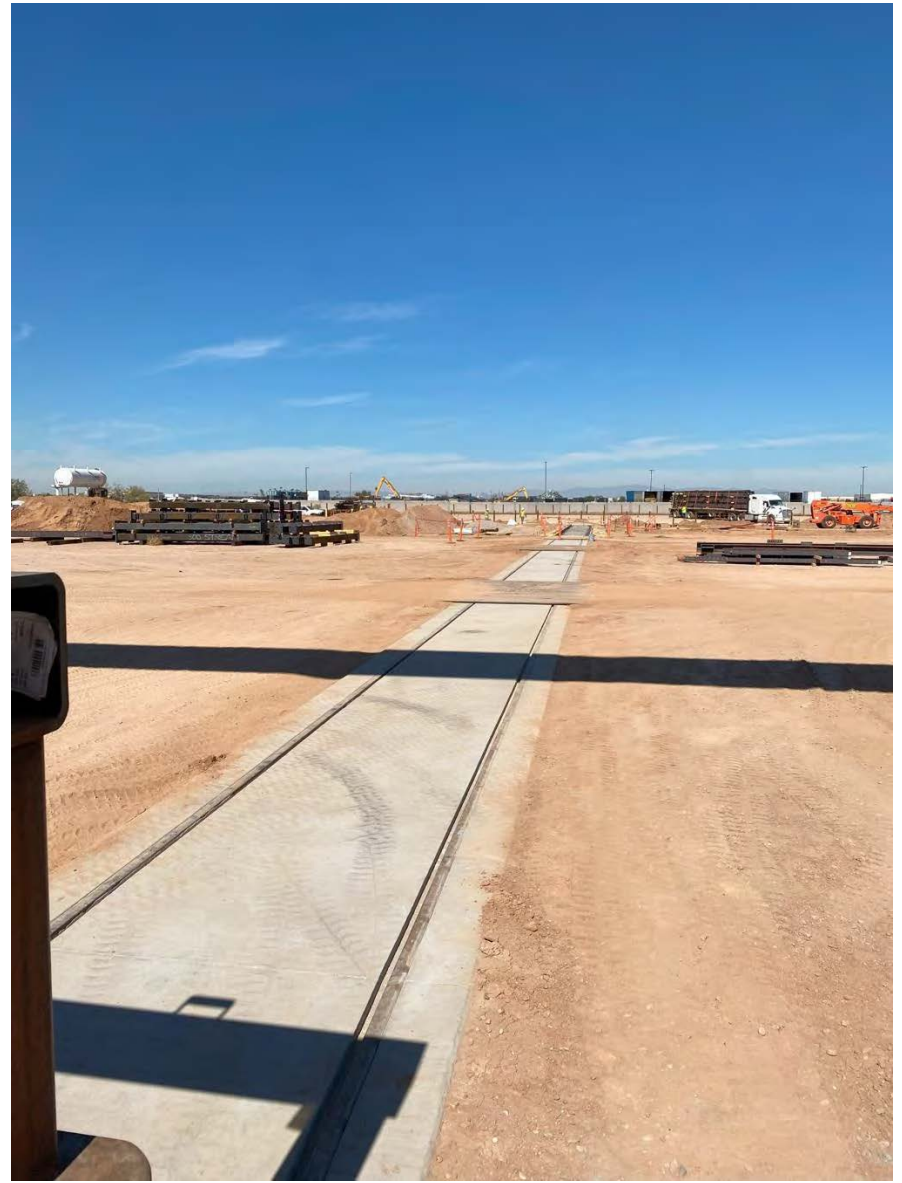
# IRON MOUNTAIN DATA CENTER






# PHASE II BEGINNINGS











# 2025

## Where will we go next?

**The future is being built with  
the strength of steel.**

**May our welding torches  
light the way!!**

## COMMUNICATION

Being devoted to effective, honest, and respectful dialogue sharing goals, desires, and expectations among both employees and customers

## DEVELOPMENT

Empowering our people with the resources and support to achieve their full potential

## ACCOUNTABILITY

Staying 100% committed to delivering results that exceed expectations

## SAFETY

Committed to an injury-free workplace through education, technology, and accountability



## INTEGRITY

Building lasting and beneficial relationships based on the principles of honesty and trust

## FAMILY

Providing support, compassion, a sense of belonging, and ownership in our collective future

## PASSION FOR EXCELLENCE

Relentless pursuit of the best in all we do

## INDUSTRY LEADER

Exhibiting a strong will to win in every aspect of our business